

Datasheet for ABIN629871 **anti-GGTLC1 antibody (C-Term)**



[Go to Product page](#)

2 Images

Overview

Quantity:	100 µg
Target:	GGTLC1
Binding Specificity:	C-Term
Reactivity:	Human, Dog, Mouse, Rat
Host:	Rabbit
Clonality:	Polyclonal
Conjugate:	This GGTLC1 antibody is un-conjugated
Application:	Immunohistochemistry (IHC), Western Blotting (WB)

Product Details

Immunogen:	GGTLC1 antibody was raised using the C terminal of GGTLC1 corresponding to a region with amino acids DQEVTAALTRHHHTQITSTFIAVVQAVRMAGGWAAASDSRKGGEPEGY
Specificity:	GGTLC1 antibody was raised against the C terminal of GGTLC1
Purification:	Purified

Target Details

Target:	GGTLC1
Alternative Name:	GGTLC1 (GGTLC1 Products)
Background:	Gamma-glutamyl transpeptidase is a membrane-bound protein that is important in the metabolism of glutathione. The protein is similar in sequence to several members of the gamma-glutamyl transpeptidase family. Gamma-glutamyl transpeptidase is a membrane-bound

Target Details

protein that is important in the metabolism of glutathione.

Molecular Weight: 25 kDa (MW of target protein)

Application Details

Application Notes: WB: 5 µg/mL, IHC: 4-8 µg/mL
Optimal conditions should be determined by the investigator.

Comment: GGTLA4 Blocking Peptide, catalog no. 33R-2128, is also available for use as a blocking control in assays to test for specificity of this GGTLA4 antibody

Restrictions: For Research Use only

Handling

Format: Lyophilized

Reconstitution: Lyophilized powder. Add distilled water for a 1 mg/mL concentration of GGTLA4 antibody in PBS

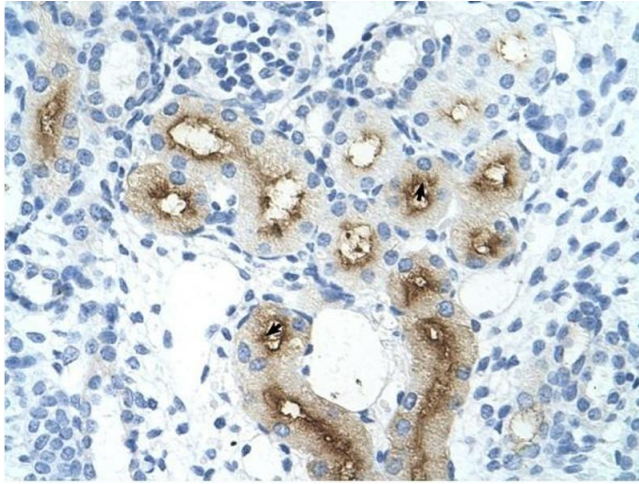
Concentration: Lot specific

Buffer: PBS

Handling Advice: Avoid repeated freeze/thaw cycles.
Dilute only prior to immediate use.

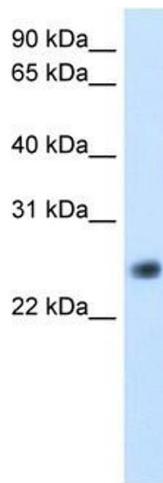
Storage: 4 °C/-20 °C

Storage Comment: Store at 2-8 °C for short periods. For longer periods of storage, store at -20 °C.



Immunohistochemistry

Image 1. GGTLA4 antibody was used for immunohistochemistry at a concentration of 4-8 ug/ml to stain Epithelial cells of renal tubule (arrows) in Human Kidney. Magnification is at 400X



Western Blotting

Image 2. GGTLA4 antibody used at 5 ug/ml to detect target protein.