

Datasheet for ABIN629872
anti-BRK1 antibody (Middle Region)



[Go to Product page](#)

3 Images

Overview

Quantity:	100 µg
Target:	BRK1
Binding Specificity:	Middle Region
Reactivity:	Human, Mouse, Rat, Dog, Zebrafish (Danio rerio)
Host:	Rabbit
Clonality:	Polyclonal
Conjugate:	This BRK1 antibody is un-conjugated
Application:	Immunohistochemistry (IHC), Western Blotting (WB)

Product Details

Immunogen:	C3 ORF10 antibody was raised using the middle region of C3 rf10 corresponding to a region with amino acids YIEITSSIKKIADFLNSFDMSCRSRLATLNEKLTALERRIEYIEARVTK
Specificity:	C3 ORF10 antibody was raised against the middle region of C3 rf10
Purification:	Purified

Target Details

Target:	BRK1
Alternative Name:	C3ORF10 (BRK1 Products)
Background:	C3orf10 is involved in regulation of actin and microtubule organization. It is a part of a WAVE complex that activates the Arp2/3 complex.

Target Details

Molecular Weight: 9 kDa (MW of target protein)

Pathways: [RTK Signaling](#)

Application Details

Application Notes: WB: 2.5 µg/mL, IHC: 4-8 µg/mL
Optimal conditions should be determined by the investigator.

Comment: C3ORF10 Blocking Peptide, catalog no. 33R-10134, is also available for use as a blocking control in assays to test for specificity of this C3ORF10 antibody

Restrictions: For Research Use only

Handling

Format: Lyophilized

Reconstitution: Lyophilized powder. Add distilled water for a 1 mg/mL concentration of C0 RF10 antibody in PBS

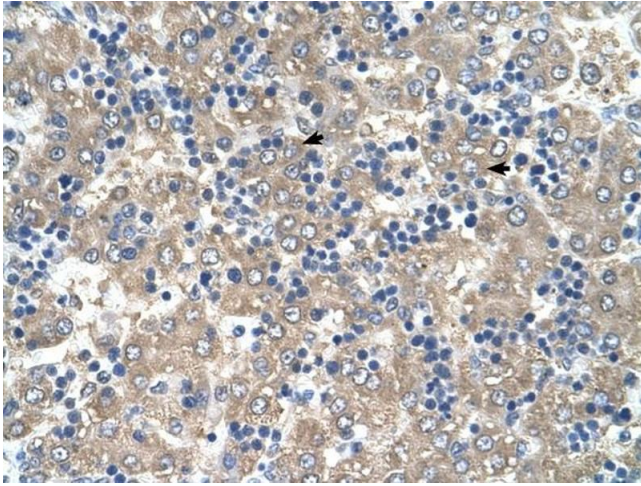
Concentration: Lot specific

Buffer: PBS

Handling Advice: Avoid repeated freeze/thaw cycles.
Dilute only prior to immediate use.

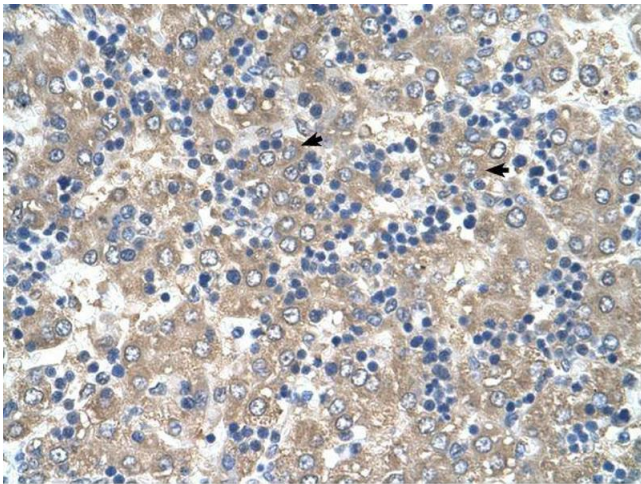
Storage: 4 °C/-20 °C

Storage Comment: Store at 2-8 °C for short periods. For longer periods of storage, store at -20 °C.



Immunohistochemistry

Image 1. C3ORF10 antibody was used for immunohistochemistry at a concentration of 4-8 ug/ml to stain Hepatocytes (arrows) in Human Liver. Magnification is at 400X



Immunohistochemistry

Image 2. C3ORF10 antibody was used for immunohistochemistry at a concentration of 4-8 ug/ml. Magnification is at 400X



Western Blotting

Image 3. C3ORF10 antibody used at 2.5 ug/ml to detect target protein.