

Datasheet for ABIN629876  
**anti-CPSF7 antibody (C-Term)**



[Go to Product page](#)

2 Images

## Overview

Quantity:	100 µg
Target:	CPSF7
Binding Specificity:	C-Term
Reactivity:	Human, Mouse, Rat, Dog
Host:	Rabbit
Clonality:	Polyclonal
Conjugate:	This CPSF7 antibody is un-conjugated
Application:	Western Blotting (WB), Immunohistochemistry (IHC)

## Product Details

Immunogen:	FLJ12529 antibody was raised using the C terminal of FLJ12529 corresponding to a region with amino acids GASGSSSRKRHRSRERSPSRSRESSRRHRDLLHNEDRHDDYFQERNREHE
Specificity:	FLJ12529 antibody was raised against the C terminal of FLJ12529
Purification:	Purified

## Target Details

Target:	CPSF7
Alternative Name:	FLJ12529 ( <a href="#">CPSF7 Products</a> )
Background:	FLJ12529 is a probable component of the cleavage factor Im complex (CFIm) that plays a key role in pre-mRNA 3' processing.

## Target Details

---

Molecular Weight: 52 kDa (MW of target protein)

## Application Details

---

Application Notes: WB: 1.25 µg/mL, IHC: 4-8 µg/mL  
Optimal conditions should be determined by the investigator.

Comment: FLJ12529 Blocking Peptide, catalog no. 33R-3172, is also available for use as a blocking control in assays to test for specificity of this FLJ12529 antibody

Restrictions: For Research Use only

## Handling

---

Format: Lyophilized

Reconstitution: Lyophilized powder. Add distilled water for a 1 mg/mL concentration of FLJ12529 antibody in PBS

Concentration: Lot specific

Buffer: PBS

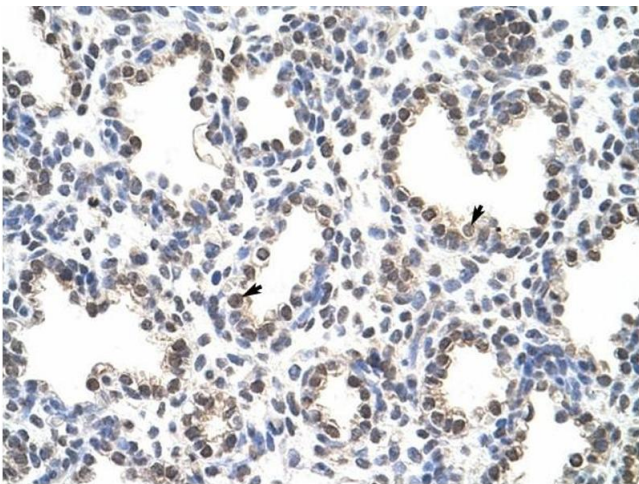
Handling Advice: Avoid repeated freeze/thaw cycles.  
Dilute only prior to immediate use.

Storage: 4 °C/-20 °C

Storage Comment: Store at 2-8 °C for short periods. For longer periods of storage, store at -20 °C.

## Images

---



### Immunohistochemistry

**Image 1.** FLJ12529 antibody was used for immunohistochemistry at a concentration of 4-8 ug/ml to stain Alveolar cells (arrows) in Human Lung. Magnification is at 400X



### Western Blotting

**Image 2.** FLJ12529 antibody used at 1.25 ug/ml to detect target protein.