

Datasheet for ABIN629878  
**anti-TMEM108 antibody (Middle Region)**



[Go to Product page](#)

1 Image

## Overview

Quantity:	100 µg
Target:	TMEM108
Binding Specificity:	Middle Region
Reactivity:	Human, Mouse, Dog, Rat
Host:	Rabbit
Clonality:	Polyclonal
Conjugate:	This TMEM108 antibody is un-conjugated
Application:	Western Blotting (WB)

## Product Details

Immunogen:	TMEM108 antibody was raised using the middle region of TMEM108 corresponding to a region with amino acids NRLVPAGTWKPGTAGNISHVAEGDKPQHRATICLSKMDIAWVILASVPI
Specificity:	TMEM108 antibody was raised against the middle region of TMEM108
Purification:	Purified

## Target Details

Target:	TMEM108
Alternative Name:	TMEM108 ( <a href="#">TMEM108 Products</a> )
Background:	TMEM108's function has not been determined yet.
Molecular Weight:	54 kDa (MW of target protein)

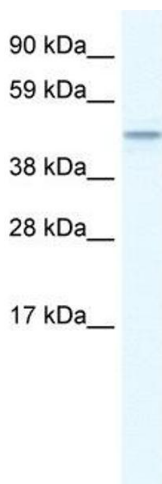
## Application Details

Application Notes:	WB: 1.25 µg/mL Optimal conditions should be determined by the investigator.
Comment:	TMEM108 Blocking Peptide, catalog no. 33R-6859, is also available for use as a blocking control in assays to test for specificity of this TMEM108 antibody
Restrictions:	For Research Use only

## Handling

Format:	Lyophilized
Reconstitution:	Lyophilized powder. Add distilled water for a 1 mg/mL concentration of TMEM108 antibody in PBS
Concentration:	Lot specific
Buffer:	PBS
Handling Advice:	Avoid repeated freeze/thaw cycles. Dilute only prior to immediate use.
Storage:	4 °C/-20 °C
Storage Comment:	Store at 2-8 °C for short periods. For longer periods of storage, store at -20 °C.

## Images



### Western Blotting

**Image 1.** TMEM108 antibody used at 1.25 µg/ml to detect target protein.