

Datasheet for ABIN629880  
**anti-ERI1 antibody (C-Term)**



[Go to Product page](#)

1 Image

## Overview

Quantity:	100 µg
Target:	ERI1
Binding Specificity:	C-Term
Reactivity:	Human, Mouse, Rat, Dog
Host:	Rabbit
Clonality:	Polyclonal
Conjugate:	This ERI1 antibody is un-conjugated
Application:	Western Blotting (WB)

## Product Details

Immunogen:	THEX1 antibody was raised using the C terminal of theX1 corresponding to a region with amino acids GSWDMSKFLNIQCQLSRLKYPPFAKKWINIRKSYGNFYKVPRSQTKLTIM
Specificity:	THEX1 antibody was raised against the C terminal of theX1
Purification:	Purified

## Target Details

Target:	ERI1
Alternative Name:	THEX1 ( <a href="#">ERI1 Products</a> )
Background:	THEX1 contains 1 SAP domain and 1 exonuclease domain. It is an RNA exonuclease that binds to the 3' end of histone mRNAs and probably degrades them, suggesting that it plays an essential role in histone mRNA decay after replication. It is also able to degrade the 3'

## Target Details

---

overhangs of short interfering RNAs (siRNAs) in vitro, suggesting a possible role as regulator of RNA interference (RNAi).

Molecular Weight: 38 kDa (MW of target protein)

## Application Details

---

Application Notes: WB: 2.5 µg/mL  
Optimal conditions should be determined by the investigator.

Comment: THEX1 Blocking Peptide, catalog no. 33R-3597, is also available for use as a blocking control in assays to test for specificity of this THEX1 antibody

Restrictions: For Research Use only

## Handling

---

Format: Lyophilized

Reconstitution: Lyophilized powder. Add distilled water for a 1 mg/mL concentration of THEX1 antibody in PBS

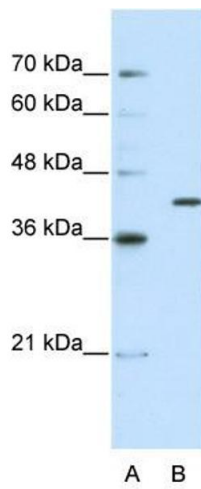
Concentration: Lot specific

Buffer: PBS

Handling Advice: Avoid repeated freeze/thaw cycles.  
Dilute only prior to immediate use.

Storage: 4 °C/-20 °C

Storage Comment: Store at 2-8 °C for short periods. For longer periods of storage, store at -20 °C.



### Western Blotting

**Image 1.** THEX1 antibody used at 2.5 ug/ml to detect target protein.