

Datasheet for ABIN629883
anti-SRSF1 antibody



[Go to Product page](#)

1 Image

Overview

Quantity:	100 µg
Target:	SRSF1
Reactivity:	Human, Mouse, Rat, Zebrafish (Danio rerio), Dog
Host:	Rabbit
Clonality:	Polyclonal
Conjugate:	This SRSF1 antibody is un-conjugated
Application:	Western Blotting (WB)

Product Details

Immunogen:	SFRS1 antibody was raised using a synthetic peptide corresponding to a region with amino acids GVVEFVRKEDMTYAVRKLDNTKFRSHEGETAYIRVKVDGPRSPSYGRSRS
Purification:	Purified

Target Details

Target:	SRSF1
Alternative Name:	SFRS1 (SRSF1 Products)
Background:	SFRS1 is a member of the arginine/serine-rich splicing factor protein family, and functions in both constitutive and alternative pre-mRNA splicing. The protein binds to pre-mRNA transcripts and components of the spliceosome, and can either activate or repress splicing depending on the location of the pre-mRNA binding site. The protein's ability to activate splicing is regulated by phosphorylation and interactions with other splicing factor associated proteins. Multiple

Target Details

	transcript variants encoding different isoforms have been found for this gene.
Molecular Weight:	27 kDa (MW of target protein)
Pathways:	Ribonucleoprotein Complex Subunit Organization

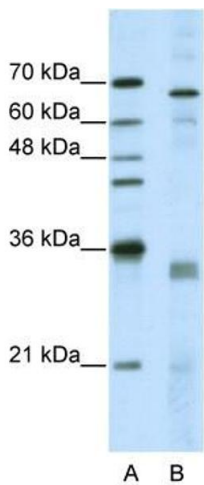
Application Details

Application Notes:	WB: 5 µg/mL Optimal conditions should be determined by the investigator.
Comment:	SFRS1 Blocking Peptide, catalog no. 33R-3658, is also available for use as a blocking control in assays to test for specificity of this SFRS1 antibody
Restrictions:	For Research Use only

Handling

Format:	Lyophilized
Reconstitution:	Lyophilized powder. Add distilled water for a 1 mg/mL concentration of SFRS1 antibody in PBS
Concentration:	Lot specific
Buffer:	PBS
Handling Advice:	Avoid repeated freeze/thaw cycles.
Storage:	4 °C/-20 °C
Storage Comment:	Store at 2-8 °C for short periods. For longer periods of storage, store at -20 °C.

Images



Western Blotting

Image 1. SFRS1 antibody used at 5 ug/ml to detect target protein.