

## Datasheet for ABIN629884 **anti-CSDC2 antibody (N-Term)**

### 2 Images



[Go to Product page](#)

### Overview

Quantity:	100 µg
Target:	CSDC2
Binding Specificity:	N-Term
Reactivity:	Human, Mouse, Rat
Host:	Rabbit
Clonality:	Polyclonal
Conjugate:	This CSDC2 antibody is un-conjugated
Application:	Western Blotting (WB), Immunohistochemistry (IHC)

### Product Details

Immunogen:	CSDC2 antibody was raised using the N terminal of CSDC2 corresponding to a region with amino acids MTSESTSPVVPPLHSPKSPVWPTFPFHREGSRVWERGGVPPRDLPSPLP
Specificity:	CSDC2 antibody was raised against the N terminal of CSDC2
Purification:	Purified

### Target Details

Target:	CSDC2
Alternative Name:	CSDC2 ( <a href="#">CSDC2 Products</a> )
Background:	CSDC2 is an RNA-binding factor which binds specifically to the very 3'UTR ends of both histone H1 and H3.3 mRNAs, encompassing the polyadenylation signal. It might play a central role in the negative regulation of histone variant synthesis in the developing brain.

## Target Details

---

Molecular Weight: 17 kDa (MW of target protein)

## Application Details

---

Application Notes: WB: 0.625 µg/mL, IHC: 4-8 µg/mL  
Optimal conditions should be determined by the investigator.

Comment: CSDC2 Blocking Peptide, catalog no. 33R-6562, is also available for use as a blocking control in assays to test for specificity of this CSDC2 antibody

Restrictions: For Research Use only

## Handling

---

Format: Lyophilized

Reconstitution: Lyophilized powder. Add distilled water for a 1 mg/mL concentration of CSDC2 antibody in PBS

Concentration: Lot specific

Buffer: PBS

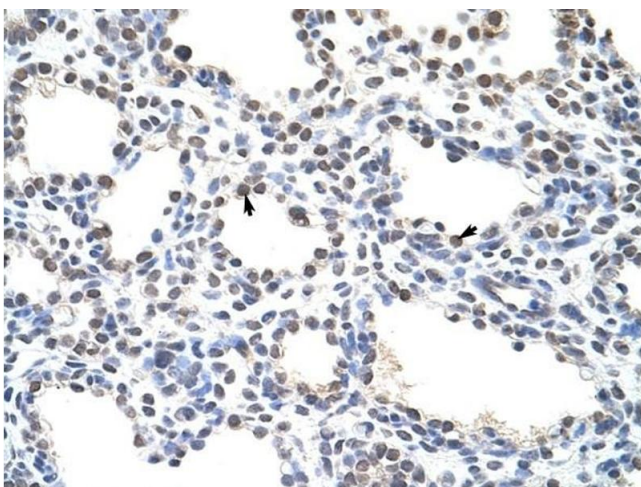
Handling Advice: Avoid repeated freeze/thaw cycles.  
Dilute only prior to immediate use.

Storage: 4 °C/-20 °C

Storage Comment: Store at 2-8 °C for short periods. For longer periods of storage, store at -20 °C.

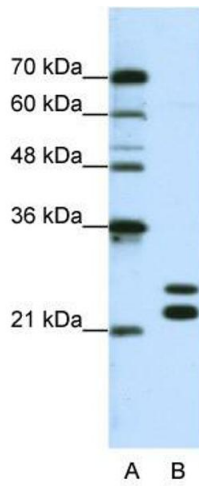
## Images

---



### Immunohistochemistry

**Image 1.** CSDC2 antibody was used for immunohistochemistry at a concentration of 4-8 ug/ml to stain Alveolar cells (arrows) in Human Lung. Magnification is at 400X



### Western Blotting

**Image 2.** CSDC2 antibody used at 0.625 ug/ml to detect target protein.