

## Datasheet for ABIN629891 **anti-RBMS3 antibody (C-Term)**



[Go to Product page](#)

### 1 Image

#### Overview

Quantity:	100 µg
Target:	RBMS3
Binding Specificity:	C-Term
Reactivity:	Human, Dog
Host:	Rabbit
Clonality:	Polyclonal
Conjugate:	This RBMS3 antibody is un-conjugated
Application:	Western Blotting (WB)

#### Product Details

Immunogen:	RBMS3 antibody was raised using the C terminal of RBMS3 corresponding to a region with amino acids TAVSIEGVVADTSPQTVAPSSQDTSGQQQIADVTSNEHAPAYSQQSKP
Specificity:	RBMS3 antibody was raised against the C terminal of RBMS3
Purification:	Purified

#### Target Details

Target:	RBMS3
Alternative Name:	RBMS3 ( <a href="#">RBMS3 Products</a> )
Background:	RBMS3 is a member of a small family of proteins which bind single stranded DNA/RNA. These proteins are characterized by the presence of two sets of ribonucleoprotein consensus sequence (RNP-CS) that contain conserved motifs, RNP1 and RNP2, originally described in RNA

## Target Details

---

binding proteins, and required for DNA binding. These proteins have been implicated in such diverse functions as DNA replication, gene transcription, cell cycle progression and apoptosis.

Molecular Weight: 46 kDa (MW of target protein)

## Application Details

---

Application Notes: WB: 2.5 µg/mL  
Optimal conditions should be determined by the investigator.

Comment: RBMS3 Blocking Peptide, catalog no. 33R-8991, is also available for use as a blocking control in assays to test for specificity of this RBMS3 antibody

Restrictions: For Research Use only

## Handling

---

Format: Lyophilized

Reconstitution: Lyophilized powder. Add distilled water for a 1 mg/mL concentration of RBMS3 antibody in PBS

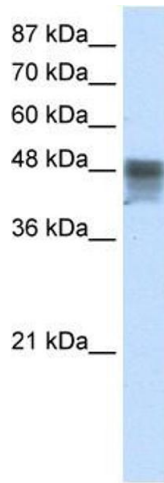
Concentration: Lot specific

Buffer: PBS

Handling Advice: Avoid repeated freeze/thaw cycles.  
Dilute only prior to immediate use.

Storage: 4 °C/-20 °C

Storage Comment: Store at 2-8 °C for short periods. For longer periods of storage, store at -20 °C.



### Western Blotting

**Image 1.** RBMS3 antibody used at 2.5 ug/ml to detect target protein.