

Datasheet for ABIN629895
anti-HNRPDL antibody (Middle Region)



[Go to Product page](#)

3 Images

Overview

Quantity:	100 µg
Target:	HNRPDL
Binding Specificity:	Middle Region
Reactivity:	Human, Mouse, Dog
Host:	Rabbit
Clonality:	Polyclonal
Conjugate:	This HNRPDL antibody is un-conjugated
Application:	Western Blotting (WB), Immunohistochemistry (IHC)

Product Details

Immunogen:	HNRPDL antibody was raised using the middle region of HNRPDL corresponding to a region with amino acids TMEDMNEYSNIEEFAEGSKINASKNQDDGKMFIGGLSWDTSKKDLTEYL
Specificity:	HNRPDL antibody was raised against the middle region of HNRPDL
Purification:	Purified

Target Details

Target:	HNRPDL
Alternative Name:	HNRPDL (HNRPDL Products)
Background:	HNRPDL belongs to the subfamily of ubiquitously expressed heterogeneous nuclear ribonucleoproteins (hnRNPs). The hnRNPs are RNA binding proteins and they complex with heterogeneous nuclear RNA (hnRNA). These proteins are associated with pre-mRNAs in the

Target Details

nucleus and appear to influence pre-mRNA processing and other aspects of mRNA metabolism and transport. While all of the hnRNPs are present in the nucleus, some seem to shuttle between the nucleus and the cytoplasm. The hnRNP proteins have distinct nucleic acid binding properties. HNRPD L has two RRM domains that bind to RNAs.

Molecular Weight: 40 kDa (MW of target protein)

Application Details

Application Notes: WB: 1 µg/mL, IHC: 4-8 µg/mL
Optimal conditions should be determined by the investigator.

Comment: HNRPD L Blocking Peptide, catalog no. 33R-9199, is also available for use as a blocking control in assays to test for specificity of this HNRPD L antibody

Restrictions: For Research Use only

Handling

Format: Lyophilized

Reconstitution: Lyophilized powder. Add distilled water for a 1 mg/mL concentration of HNRPD L antibody in PBS

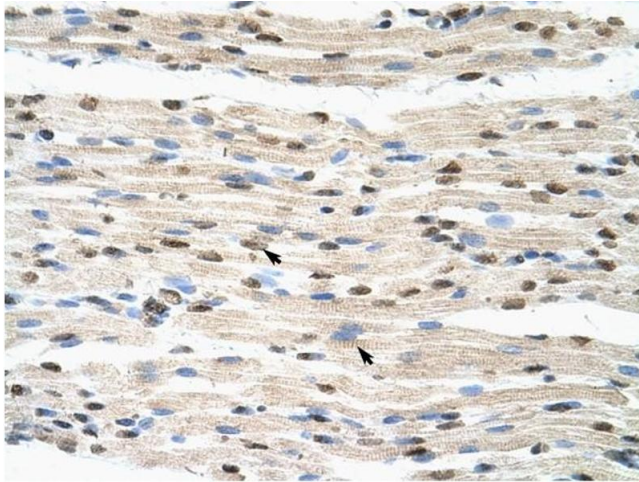
Concentration: Lot specific

Buffer: PBS

Handling Advice: Avoid repeated freeze/thaw cycles.
Dilute only prior to immediate use.

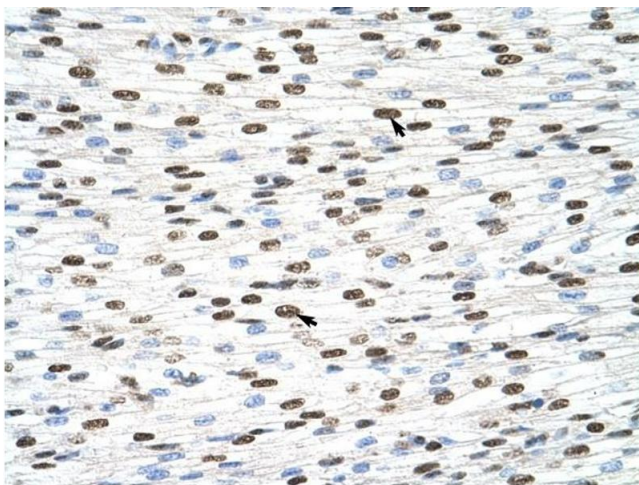
Storage: 4 °C/-20 °C

Storage Comment: Store at 2-8 °C for short periods. For longer periods of storage, store at -20 °C.



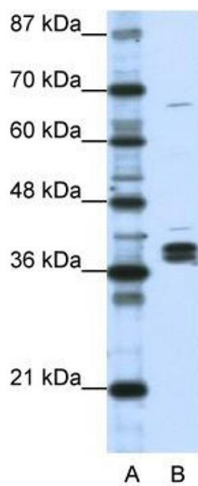
Immunohistochemistry

Image 1. HNRPDL antibody was used for immunohistochemistry at a concentration of 4-8 ug/ml to stain Skeletal muscle cells (arrows) in Human Muscle. Magnification is at 400X



Immunohistochemistry

Image 2. HNRPDL antibody was used for immunohistochemistry at a concentration of 4-8 ug/ml to stain Myocardial cells (arrows) in Human Heart. Magnification is at 400X.



Western Blotting

Image 3. HNRPDL antibody used at 1 ug/ml to detect target protein.