

Datasheet for ABIN629897  
**anti-SURF6 antibody (N-Term)**



[Go to Product page](#)

1 Image

## Overview

Quantity:	100 µg
Target:	SURF6
Binding Specificity:	N-Term
Reactivity:	Human
Host:	Rabbit
Clonality:	Polyclonal
Conjugate:	This SURF6 antibody is un-conjugated
Application:	Western Blotting (WB)

## Product Details

Immunogen:	SURF6 antibody was raised using the N terminal of SURF6 corresponding to a region with amino acids ICSHSAPEQQARTRAGKTQGSETAGPPKKKRKKTQKKFRKREEKAAEHKA
Specificity:	SURF6 antibody was raised against the N terminal of SURF6
Purification:	Purified

## Target Details

Target:	SURF6
Alternative Name:	SURF6 ( <a href="#">SURF6 Products</a> )
Background:	This gene is located in the surfeit gene cluster, a group of very tightly linked genes that do not share sequence similarity. The gene demonstrates features of a housekeeping gene, being ubiquitously expressed, and the encoded protein has been localized to the nucleolus. The

## Target Details

---

protein includes motifs found in both the mouse and fish orthologs, which suggests a putative function as a nucleolar-matrix protein with nucleic acid-binding properties, based on characteristics determined in mouse.

Molecular Weight: 40 kDa (MW of target protein)

Pathways: [Ribonucleoprotein Complex Subunit Organization](#), [Ribosome Assembly](#)

## Application Details

---

Application Notes: WB: 1.25 µg/mL  
Optimal conditions should be determined by the investigator.

Comment: SURF6 Blocking Peptide, catalog no. 33R-3906, is also available for use as a blocking control in assays to test for specificity of this SURF6 antibody

Restrictions: For Research Use only

## Handling

---

Format: Lyophilized

Reconstitution: Lyophilized powder. Add distilled water for a 1 mg/mL concentration of SURF6 antibody in PBS

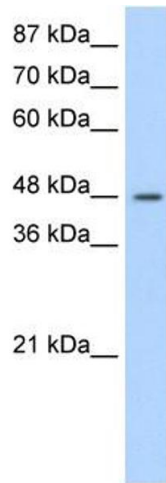
Concentration: Lot specific

Buffer: PBS

Handling Advice: Avoid repeated freeze/thaw cycles.  
Dilute only prior to immediate use.

Storage: 4 °C/-20 °C

Storage Comment: Store at 2-8 °C for short periods. For longer periods of storage, store at -20 °C.



### Western Blotting

**Image 1.** SURF6 antibody used at 1.25 ug/ml to detect target protein.