

Datasheet for ABIN629898
anti-SURF6 antibody (Middle Region)



[Go to Product page](#)

3 Images

Overview

Quantity:	100 µg
Target:	SURF6
Binding Specificity:	Middle Region
Reactivity:	Human
Host:	Rabbit
Clonality:	Polyclonal
Conjugate:	This SURF6 antibody is un-conjugated
Application:	Western Blotting (WB), Immunohistochemistry (IHC)

Product Details

Immunogen:	SURF6 antibody was raised using the middle region of SURF6 corresponding to a region with amino acids EPREPPGLIFNKVEVSEDEPASKAQRKQRVKGNLPLTGRNYRQLL
Specificity:	SURF6 antibody was raised against the middle region of SURF6
Purification:	Purified

Target Details

Target:	SURF6
Alternative Name:	SURF6 (SURF6 Products)
Background:	This gene is located in the surfeit gene cluster, a group of very tightly linked genes that do not share sequence similarity. The gene demonstrates features of a housekeeping gene, being ubiquitously expressed, and the encoded protein has been localized to the nucleolus. The

Target Details

protein includes motifs found in both the mouse and fish orthologs, which suggests a putative function as a nucleolar-matrix protein with nucleic acid-binding properties, based on characteristics determined in mouse.

Molecular Weight: 40 kDa (MW of target protein)

Pathways: [Ribonucleoprotein Complex Subunit Organization](#), [Ribosome Assembly](#)

Application Details

Application Notes: WB: 2.5 µg/mL, IHC: 4-8 µg/mL
Optimal conditions should be determined by the investigator.

Comment: SURF6 Blocking Peptide, catalog no. 33R-2644, is also available for use as a blocking control in assays to test for specificity of this SURF6 antibody

Restrictions: For Research Use only

Handling

Format: Lyophilized

Reconstitution: Lyophilized powder. Add distilled water for a 1 mg/mL concentration of SURF6 antibody in PBS

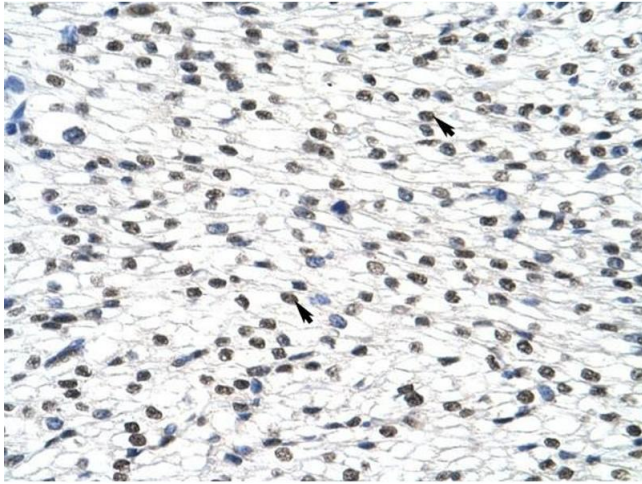
Concentration: Lot specific

Buffer: PBS

Handling Advice: Avoid repeated freeze/thaw cycles.
Dilute only prior to immediate use.

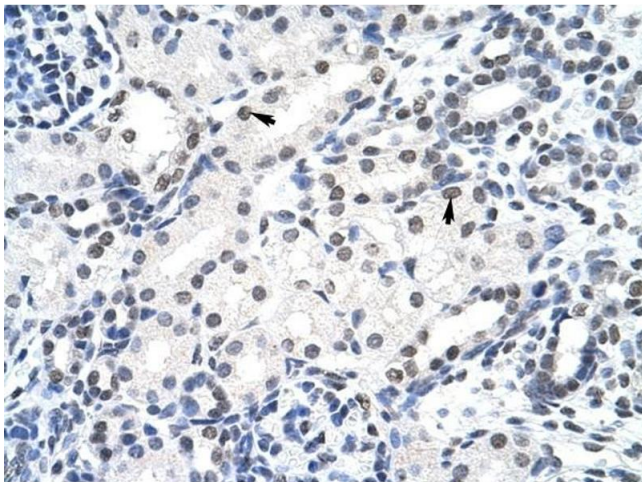
Storage: 4 °C/-20 °C

Storage Comment: Store at 2-8 °C for short periods. For longer periods of storage, store at -20 °C.



Immunohistochemistry

Image 1. SURF6 antibody was used for immunohistochemistry at a concentration of 4-8 ug/ml to stain Myocardial cells (arrows) in Human Heart. Magnification is at 400X



Immunohistochemistry

Image 2. SURF6 antibody was used for immunohistochemistry at a concentration of 4-8 ug/ml to stain Epithelial cells of renal tubule (arrows) in Human Kidney. Magnification is at 400X.



Western Blotting

Image 3. SURF6 antibody used at 2.5 ug/ml to detect target protein.