

Datasheet for ABIN629899  
**anti-HNRNPH3 antibody**

2 Images



[Go to Product page](#)

## Overview

Quantity:	100 µg
Target:	HNRNPH3
Reactivity:	Human, Rat, Mouse, Dog
Host:	Rabbit
Clonality:	Polyclonal
Conjugate:	This HNRNPH3 antibody is un-conjugated
Application:	Western Blotting (WB), Immunohistochemistry (IHC)

## Product Details

Immunogen:	HNRPH3 antibody was raised using a synthetic peptide corresponding to a region with amino acids DYQGRSTGEAFVQFASKEIAENALGKHKERIGHRYIEIFRSSRSEIKGFY
Purification:	Purified

## Target Details

Target:	HNRNPH3
Alternative Name:	HNRPH3 ( <a href="#">HNRNPH3 Products</a> )
Background:	HNRPH3 belongs to the subfamily of ubiquitously expressed heterogeneous nuclear ribonucleoproteins (hnRNPs). The hnRNPs are RNA binding proteins and they complex with heterogeneous nuclear RNA (hnRNA). These proteins are associated with pre-mRNAs in the nucleus and appear to influence pre-mRNA processing and other aspects of mRNA metabolism and transport. While all of the hnRNPs are present in the nucleus, some seem to shuttle

## Target Details

---

between the nucleus and the cytoplasm. The hnRNP proteins have distinct nucleic acid binding properties.

Molecular Weight: 38 kDa (MW of target protein)

## Application Details

---

Application Notes: WB: 1 µg/mL, IHC: 4-8 µg/mL  
Optimal conditions should be determined by the investigator.

Comment: HNRPH3 Blocking Peptide, catalog no. 33R-2244, is also available for use as a blocking control in assays to test for specificity of this HNRPH3 antibody

Restrictions: For Research Use only

## Handling

---

Format: Lyophilized

Reconstitution: Lyophilized powder. Add distilled water for a 1 mg/mL concentration of HNRPH3 antibody in PBS

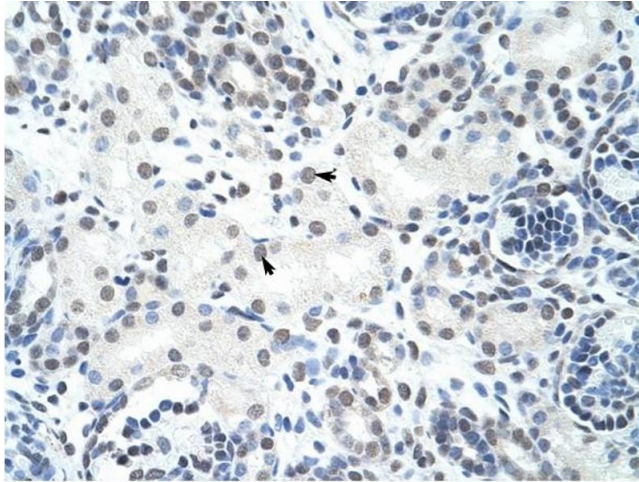
Concentration: Lot specific

Buffer: PBS

Handling Advice: Avoid repeated freeze/thaw cycles.

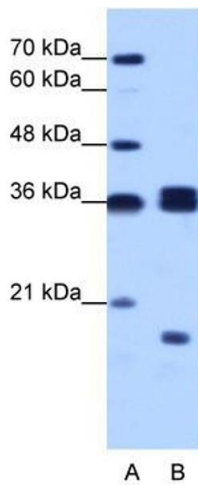
Storage: 4 °C/-20 °C

Storage Comment: Store at 2-8 °C for short periods. For longer periods of storage, store at -20 °C.



### Immunohistochemistry

**Image 1.** HNRPH3 antibody was used for immunohistochemistry at a concentration of 4-8 ug/ml to stain Epithelial cells of renal tubule (arrows) in Human Kidney. Magnification is at 400X



### Western Blotting

**Image 2.** HNRPH3 antibody used at 1 ug/ml to detect target protein.