

## Datasheet for ABIN629903 **anti-EXOSC4 antibody (N-Term)**



[Go to Product page](#)

### 3 Images

#### Overview

Quantity:	100 µg
Target:	EXOSC4
Binding Specificity:	N-Term
Reactivity:	Human, Mouse, Rat, Dog
Host:	Rabbit
Clonality:	Polyclonal
Conjugate:	This EXOSC4 antibody is un-conjugated
Application:	Western Blotting (WB), Immunohistochemistry (IHC)

#### Product Details

Immunogen:	EXOSC4 antibody was raised using the N terminal of EXOSC4 corresponding to a region with amino acids SDQGYRVDGRRAGELRKIQARMGVFAQADGSAYIEQGNTKALAVVYGPHE
Specificity:	EXOSC4 antibody was raised against the N terminal of EXOSC4
Purification:	Purified

#### Target Details

Target:	EXOSC4
Alternative Name:	EXOSC4 ( <a href="#">EXOSC4 Products</a> )
Background:	EXOSC4 belongs to the RNase PH family. It is a component of the exosome 3'->5' exoribonuclease complex and is required for the 3' processing of the 7S pre-rRNA to the mature 5.8S rRNA. It has a 3'-5' exonuclease activity.

## Target Details

Molecular Weight: 27 kDa (MW of target protein)

## Application Details

Application Notes: WB: 5 µg/mL, IHC: 4-8 µg/mL  
Optimal conditions should be determined by the investigator.

Comment: EXOSC4 Blocking Peptide, catalog no. 33R-8366, is also available for use as a blocking control in assays to test for specificity of this EXOSC4 antibody

Restrictions: For Research Use only

## Handling

Format: Lyophilized

Reconstitution: Lyophilized powder. Add distilled water for a 1 mg/mL concentration of EXOSC4 antibody in PBS

Concentration: Lot specific

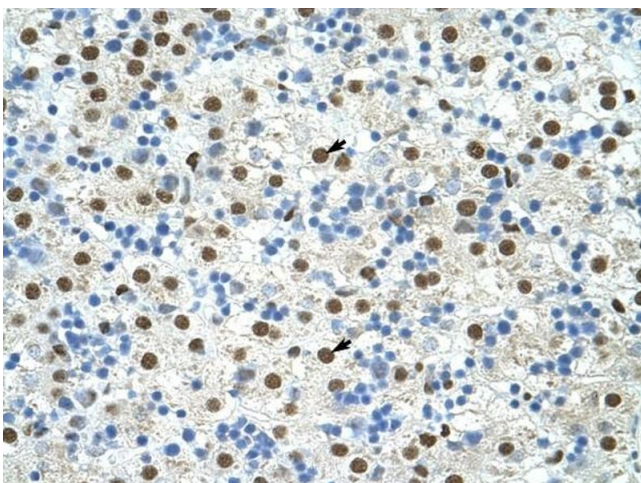
Buffer: PBS

Handling Advice: Avoid repeated freeze/thaw cycles.  
Dilute only prior to immediate use.

Storage: 4 °C/-20 °C

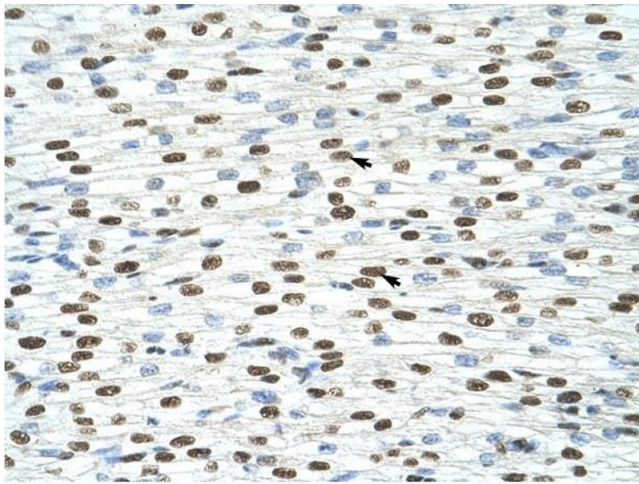
Storage Comment: Store at 2-8 °C for short periods. For longer periods of storage, store at -20 °C.

## Images



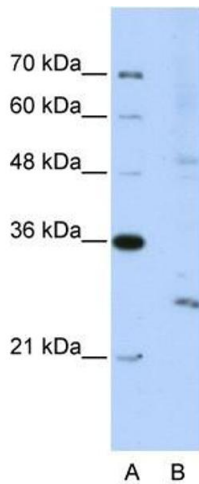
### Immunohistochemistry

**Image 1.** EXOSC4 antibody was used for immunohistochemistry at a concentration of 4-8 ug/ml to stain Hepatocytes (arrows) in Human Liver. Magnification is at 400X



### Immunohistochemistry

**Image 2.** EXOSC4 antibody was used for immunohistochemistry at a concentration of 4-8 ug/ml to stain Myocardial cells (arrows) in Human Heart. Magnification is at 400X.



### Western Blotting

**Image 3.** EXOSC4 antibody used at 5 ug/ml to detect target protein.