

Datasheet for ABIN629905  
**anti-SF3B1 antibody (Middle Region)**



[Go to Product page](#)

2 Images

## Overview

Quantity:	100 µg
Target:	SF3B1
Binding Specificity:	Middle Region
Reactivity:	Human, Mouse, Rat, Dog
Host:	Rabbit
Clonality:	Polyclonal
Conjugate:	This SF3B1 antibody is un-conjugated
Application:	Western Blotting (WB), Immunohistochemistry (IHC)

## Product Details

Immunogen:	SF3 B1 antibody was raised using the middle region of SF3 1 corresponding to a region with amino acids LLNDIPQSTEQYDPFAEHRPPKIADREDEYKKHRRRTMIISPERLDPFADG
Specificity:	SF3 B1 antibody was raised against the middle region of SF3 1
Purification:	Purified

## Target Details

Target:	SF3B1
Alternative Name:	SF3B1 ( <a href="#">SF3B1 Products</a> )
Background:	SF3B1 is the subunit 1 of the splicing factor 3b protein complex. Splicing factor 3b, together with splicing factor 3a and a 12S RNA unit, forms the U2 small nuclear ribonucleoproteins complex (U2 snRNP). The splicing factor 3b/3a complex binds pre-mRNA upstream of the

## Target Details

---

intron's branch site in a sequence independent manner and may anchor the U2 snRNP to the pre-mRNA. Splicing factor 3b is also a component of the minor U12-type spliceosome.

Molecular Weight: 87 kDa (MW of target protein)

Pathways: [Chromatin Binding](#)

## Application Details

---

Application Notes: WB: 1.25 µg/mL, IHC: 4-8 µg/mL  
Optimal conditions should be determined by the investigator.

Comment: SF3B1 Blocking Peptide, catalog no. 33R-5171, is also available for use as a blocking control in assays to test for specificity of this SF3B1 antibody

Restrictions: For Research Use only

## Handling

---

Format: Lyophilized

Reconstitution: Lyophilized powder. Add distilled water for a 1 mg/mL concentration of SF0 1 antibody in PBS

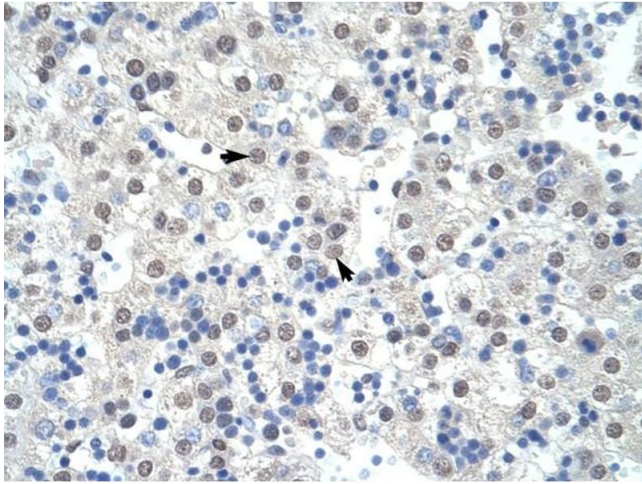
Concentration: Lot specific

Buffer: PBS

Handling Advice: Avoid repeated freeze/thaw cycles.  
Dilute only prior to immediate use.

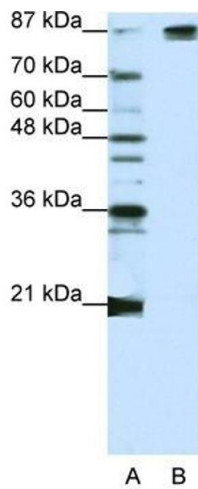
Storage: 4 °C/-20 °C

Storage Comment: Store at 2-8 °C for short periods. For longer periods of storage, store at -20 °C.



### Immunohistochemistry

**Image 1.** SF3B1 antibody was used for immunohistochemistry at a concentration of 4-8 ug/ml to stain Hepatocytes (arrows) in Human Liver. Magnification is at 400X



### Western Blotting

**Image 2.** SF3B1 antibody used at 1.25 ug/ml to detect target protein.