

Datasheet for ABIN629906 **anti-SF3B1 antibody (N-Term)**

3 Images



[Go to Product page](#)

Overview

Quantity:	100 µg
Target:	SF3B1
Binding Specificity:	N-Term
Reactivity:	Human, Mouse, Rat, Dog
Host:	Rabbit
Clonality:	Polyclonal
Conjugate:	This SF3B1 antibody is un-conjugated
Application:	Western Blotting (WB), Immunohistochemistry (IHC)

Product Details

Immunogen:	SF3 B1 antibody was raised using the N terminal of SF3 1 corresponding to a region with amino acids MAKIAKTHEDIAEQIREIQGKKAALDEAQGVGLDSTGYDDQEIYGGSDSR
Specificity:	SF3 B1 antibody was raised against the N terminal of SF3 1
Purification:	Purified

Target Details

Target:	SF3B1
Alternative Name:	SF3B1 (SF3B1 Products)
Background:	SF3B1 is the subunit 1 of the splicing factor 3b protein complex. Splicing factor 3b, together with splicing factor 3a and a 12S RNA unit, forms the U2 small nuclear ribonucleoproteins complex (U2 snRNP). The splicing factor 3b/3a complex binds pre-mRNA upstream of the

Target Details

intron's branch site in a sequence independent manner and may anchor the U2 snRNP to the pre-mRNA. Splicing factor 3b is also a component of the minor U12-type spliceosome.

Molecular Weight: 143 kDa (MW of target protein)

Pathways: [Chromatin Binding](#)

Application Details

Application Notes: WB: 1.25 µg/mL, IHC: 4-8 µg/mL
Optimal conditions should be determined by the investigator.

Comment: SF3B1 Blocking Peptide, catalog no. 33R-5678, is also available for use as a blocking control in assays to test for specificity of this SF3B1 antibody

Restrictions: For Research Use only

Handling

Format: Lyophilized

Reconstitution: Lyophilized powder. Add distilled water for a 1 mg/mL concentration of SF0 1 antibody in PBS

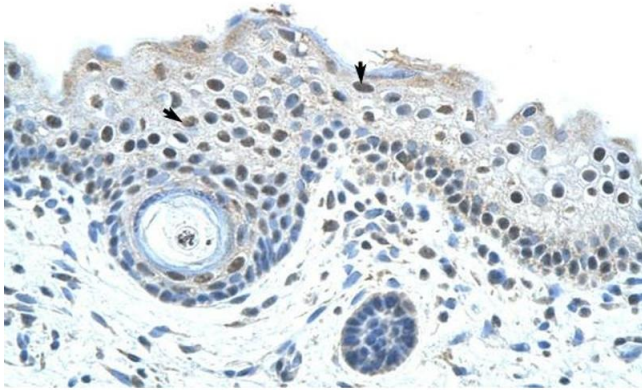
Concentration: Lot specific

Buffer: PBS

Handling Advice: Avoid repeated freeze/thaw cycles.
Dilute only prior to immediate use.

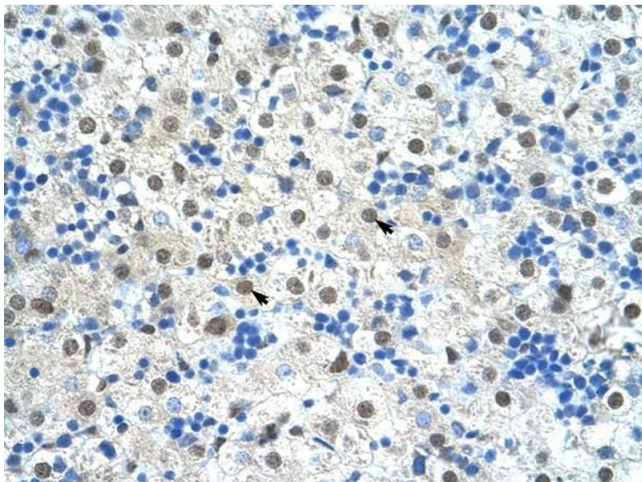
Storage: 4 °C/-20 °C

Storage Comment: Store at 2-8 °C for short periods. For longer periods of storage, store at -20 °C.



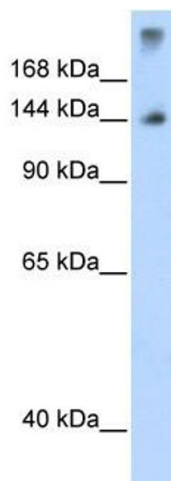
Immunohistochemistry

Image 1. SF3B1 antibody was used for immunohistochemistry at a concentration of 4-8 ug/ml to stain Epidermal cells (arrows) in Human Skin. Magnification is at 400X



Immunohistochemistry

Image 2. SF3B1 antibody was used for immunohistochemistry at a concentration of 4-8 ug/ml to stain Hepatocytes (arrows) in Human Liver. Magnification is at 400X.



Western Blotting

Image 3. SF3B1 antibody used at 1.25 ug/ml to detect target protein.