

Datasheet for ABIN629910 **anti-EXOSC7 antibody (N-Term)**



[Go to Product page](#)

2 Images

Overview

Quantity:	100 µg
Target:	EXOSC7
Binding Specificity:	N-Term
Reactivity:	Human, Rat, Mouse, Dog
Host:	Rabbit
Clonality:	Polyclonal
Conjugate:	This EXOSC7 antibody is un-conjugated
Application:	Western Blotting (WB), Immunohistochemistry (IHC)

Product Details

Immunogen:	EXOSC7 antibody was raised using the N terminal of EXOSC7 corresponding to a region with amino acids LEKPNEGYLEFFVDCSASATPEFEGRGDDLGTEIANTLYRIFNNKSSVD
Specificity:	EXOSC7 antibody was raised against the N terminal of EXOSC7
Purification:	Purified

Target Details

Target:	EXOSC7
Alternative Name:	EXOSC7 (EXOSC7 Products)
Background:	EXOSC7 belongs to the RNase PH family. It is a component of the exosome 3'->5' exoribonuclease complex and is required for the 3' processing of the 7S pre-rRNA to the mature 5.8S rRNA.

Target Details

Molecular Weight: 32 kDa (MW of target protein)

Application Details

Application Notes: WB: 1.25 µg/mL, IHC: 4-8 µg/mL
Optimal conditions should be determined by the investigator.

Comment: EXOSC7 Blocking Peptide, catalog no. 33R-4910, is also available for use as a blocking control in assays to test for specificity of this EXOSC7 antibody

Restrictions: For Research Use only

Handling

Format: Lyophilized

Reconstitution: Lyophilized powder. Add distilled water for a 1 mg/mL concentration of EXOSC7 antibody in PBS

Concentration: Lot specific

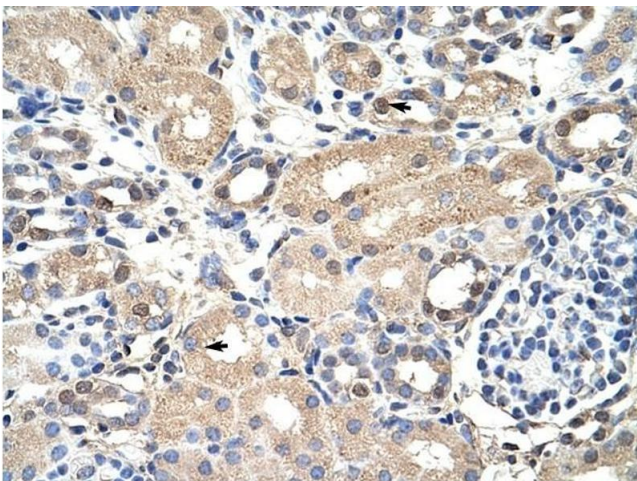
Buffer: PBS

Handling Advice: Avoid repeated freeze/thaw cycles.
Dilute only prior to immediate use.

Storage: 4 °C/-20 °C

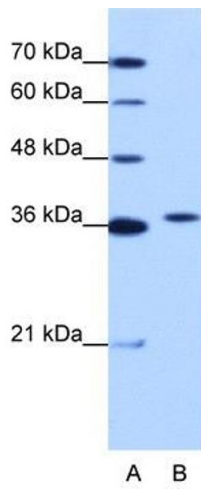
Storage Comment: Store at 2-8 °C for short periods. For longer periods of storage, store at -20 °C.

Images



Immunohistochemistry

Image 1. EXOSC7 antibody was used for immunohistochemistry at a concentration of 4-8 ug/ml to stain Epithelial cells of renal tubule (arrows) in Human Kidney. Magnification is at 400X



Western Blotting

Image 2. EXOSC7 antibody used at 1.25 ug/ml to detect target protein.