

Datasheet for ABIN629911  
**anti-Raly antibody (C-Term)**

2 Images



[Go to Product page](#)

## Overview

Quantity:	100 µg
Target:	Raly (RALY)
Binding Specificity:	C-Term
Reactivity:	Human, Mouse, Rat, Dog
Host:	Rabbit
Clonality:	Polyclonal
Conjugate:	This Raly antibody is un-conjugated
Application:	Western Blotting (WB), Immunohistochemistry (IHC)

## Product Details

Immunogen:	RALY antibody was raised using the C terminal of RALY corresponding to a region with amino acids GGGSSRPPAPQENTTSEAGLPQGEARTRDDGDEEGLLTHSEEELEHSQDT
Specificity:	RALY antibody was raised against the C terminal of RALY
Purification:	Purified

## Target Details

Target:	Raly (RALY)
Alternative Name:	RALY ( <a href="#">RALY Products</a> )
Background:	In infectious mononucleosis, anti-EBNA-1 antibodies are produced which cross-react with multiple normal human proteins. The cross-reactivity is due to anti-gly/ala antibodies that cross-react with host proteins containing configurations like those in the EBNA-1 repeat. One

## Target Details

---

such antigen is RALY which is a member of the heterogeneous nuclear ribonucleoprotein gene family. In infectious mononucleosis, anti-EBNA-1 antibodies are produced which cross-react with multiple normal human proteins. The cross-reactivity is due to anti-gly/ala antibodies that cross-react with host proteins containing configurations like those in the EBNA-1 repeat. One such antigen is RALY which is a member of the heterogeneous nuclear ribonucleoprotein gene family.

---

Molecular Weight: 32 kDa (MW of target protein)

## Application Details

---

Application Notes: WB: 1.25 µg/mL, IHC: 4-8 µg/mL  
Optimal conditions should be determined by the investigator.

---

Comment: RALY Blocking Peptide, catalog no. 33R-3284, is also available for use as a blocking control in assays to test for specificity of this RALY antibody

---

Restrictions: For Research Use only

## Handling

---

Format: Lyophilized

---

Reconstitution: Lyophilized powder. Add distilled water for a 1 mg/mL concentration of RALY antibody in PBS

---

Concentration: Lot specific

---

Buffer: PBS

---

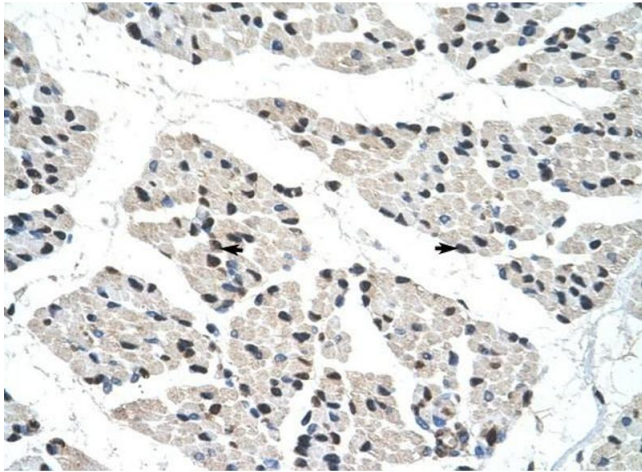
Handling Advice: Avoid repeated freeze/thaw cycles.  
Dilute only prior to immediate use.

---

Storage: 4 °C/-20 °C

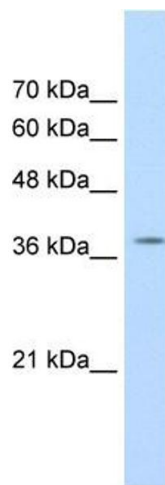
---

Storage Comment: Store at 2-8 °C for short periods. For longer periods of storage, store at -20 °C.



### Immunohistochemistry

**Image 1.** RALY antibody was used for immunohistochemistry at a concentration of 4-8 ug/ml to stain Skeletal muscle cells (arrows) in Human Muscle. Magnification is at 400X



### Western Blotting

**Image 2.** RALY antibody used at 1.25 ug/ml to detect target protein.