

Datasheet for ABIN629913 **anti-ISG20 antibody (N-Term)**



[Go to Product page](#)

1 Image

Overview

Quantity:	100 µg
Target:	ISG20
Binding Specificity:	N-Term
Reactivity:	Human, Dog
Host:	Rabbit
Clonality:	Polyclonal
Conjugate:	This ISG20 antibody is un-conjugated
Application:	Western Blotting (WB)

Product Details

Immunogen:	ISG20 antibody was raised using the N terminal of ISG20 corresponding to a region with amino acids GAVLYDKFIRPEGEITDYRTRVSGVTPQHVMVGATPFAVARLEILQLK GK
Specificity:	ISG20 antibody was raised against the N terminal of ISG20
Purification:	Purified

Target Details

Target:	ISG20
Alternative Name:	ISG20 (ISG20 Products)
Background:	ISG20 belongs to the the exonuclease superfamily. It is exonuclease with specificity for single-stranded RNA and, to a lesser extent for DNA. It degrades RNA at a rate that is approximately 35-fold higher than its rate for single-stranded DNA. It is involved in the antiviral function of IFN

Target Details

against RNA viruses.

Molecular Weight: 20 kDa (MW of target protein)

Application Details

Application Notes: WB: 1.25 µg/mL

Optimal conditions should be determined by the investigator.

Comment: ISG20 Blocking Peptide, catalog no. 33R-3179, is also available for use as a blocking control in assays to test for specificity of this ISG20 antibody

Restrictions: For Research Use only

Handling

Format: Lyophilized

Reconstitution: Lyophilized powder. Add distilled water for a 1 mg/mL concentration of ISG20 antibody in PBS

Concentration: Lot specific

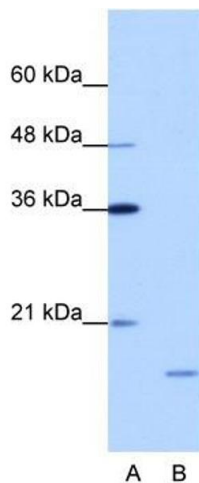
Buffer: PBS

Handling Advice: Avoid repeated freeze/thaw cycles.
Dilute only prior to immediate use.

Storage: 4 °C/-20 °C

Storage Comment: Store at 2-8 °C for short periods. For longer periods of storage, store at -20 °C.

Images



Western Blotting

Image 1. ISG20 antibody used at 1.25 ug/ml to detect target protein.