

Datasheet for ABIN629915
anti-RPP29 antibody

2 Images



[Go to Product page](#)

Overview

Quantity:	100 µg
Target:	RPP29 (POP4)
Reactivity:	Human, Dog
Host:	Rabbit
Clonality:	Polyclonal
Conjugate:	This RPP29 antibody is un-conjugated
Application:	Western Blotting (WB), Immunohistochemistry (IHC)

Product Details

Immunogen:	POP4 antibody was raised using a synthetic peptide corresponding to a region with amino acids EDRLKVIPKLNCVFTVETDGFISYIYGSKFQLRSSERSAKKFKAKGTIDL
Purification:	Purified

Target Details

Target:	RPP29 (POP4)
Alternative Name:	POP4 (POP4 Products)
Background:	POP4 is a part of ribonuclease P, a protein complex that generates mature tRNA molecules by cleaving their 5'-ends. It may function with RPP38 to coordinate the nucleolar targeting and/or assembly of RNase P.
Molecular Weight:	24 kDa (MW of target protein)

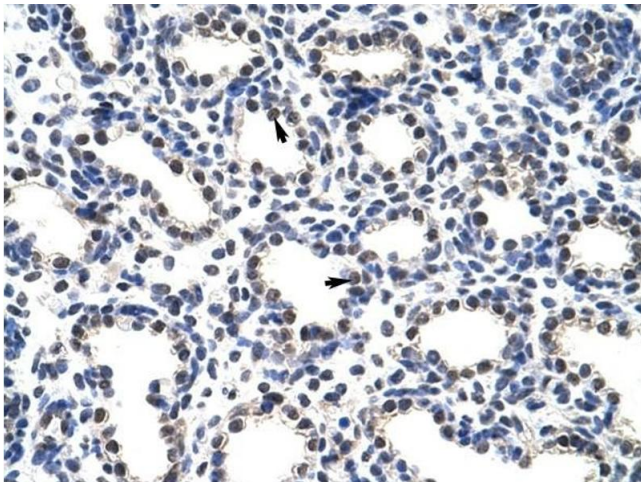
Application Details

Application Notes:	WB: 1.25 µg/mL, IHC: 4-8 µg/mL Optimal conditions should be determined by the investigator.
Comment:	POP4 Blocking Peptide, catalog no. 33R-2327, is also available for use as a blocking control in assays to test for specificity of this POP4 antibody
Restrictions:	For Research Use only

Handling

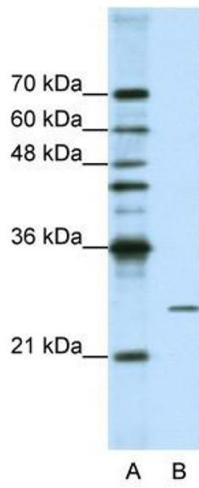
Format:	Lyophilized
Reconstitution:	Lyophilized powder. Add distilled water for a 1 mg/mL concentration of POP4 antibody in PBS
Concentration:	Lot specific
Buffer:	PBS
Handling Advice:	Avoid repeated freeze/thaw cycles.
Storage:	4 °C/-20 °C
Storage Comment:	Store at 2-8 °C for short periods. For longer periods of storage, store at -20 °C.

Images



Immunohistochemistry

Image 1. POP4 antibody was used for immunohistochemistry at a concentration of 4-8 ug/ml to stain Alveolar cells (arrows) in Human Lung. Magnification is at 400X



Western Blotting

Image 2. POP4 antibody used at 1.25 ug/ml to detect target protein.