

Datasheet for ABIN629919  
**anti-EXOSC3 antibody (C-Term)**



[Go to Product page](#)

2 Images

## Overview

Quantity:	100 µg
Target:	EXOSC3
Binding Specificity:	C-Term
Reactivity:	Human
Host:	Rabbit
Clonality:	Polyclonal
Conjugate:	This EXOSC3 antibody is un-conjugated
Application:	Western Blotting (WB), Immunohistochemistry (IHC)

## Product Details

Immunogen:	EXOSC3 antibody was raised using the C terminal of EXOSC3 corresponding to a region with amino acids PLEIVFGMNGRIWVKAKTIQQTLILANILEACEHMTSDQRKQIFSRLAES
Specificity:	EXOSC3 antibody was raised against the C terminal of EXOSC3
Purification:	Purified

## Target Details

Target:	EXOSC3
Alternative Name:	EXOSC3 ( <a href="#">EXOSC3 Products</a> )
Background:	EXOSC3 is component of the exosome 3'->5' exoribonuclease complex and is required for the 3' processing of the 7S pre-RNA to the mature 5.8S rRNA.

## Target Details

---

Molecular Weight:	30 kDa (MW of target protein)
Pathways:	<a href="#">Regulation of Leukocyte Mediated Immunity</a> , <a href="#">Positive Regulation of Immune Effector Process</a> , <a href="#">Production of Molecular Mediator of Immune Response</a> , <a href="#">SARS-CoV-2 Protein Interactome</a>

## Application Details

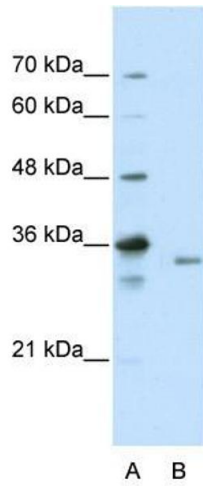
---

Application Notes:	WB: 2.5 µg/mL, IHC: 4-8 µg/mL Optimal conditions should be determined by the investigator.
Comment:	EXOSC3 Blocking Peptide, catalog no. 33R-7189, is also available for use as a blocking control in assays to test for specificity of this EXOSC3 antibody
Restrictions:	For Research Use only

## Handling

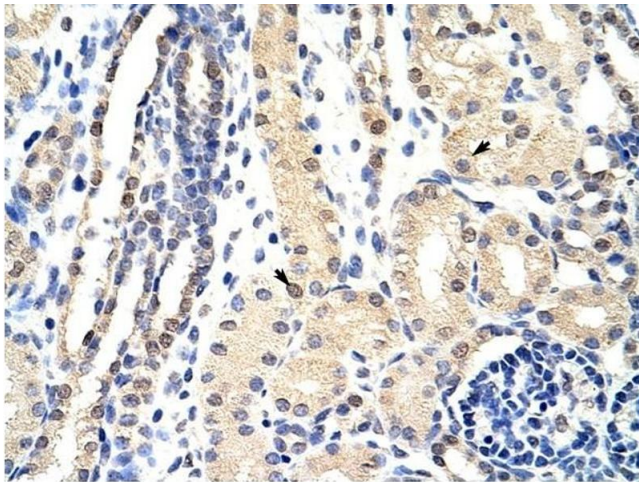
---

Format:	Lyophilized
Reconstitution:	Lyophilized powder. Add distilled water for a 1 mg/mL concentration of EXOSC3 antibody in PBS
Concentration:	Lot specific
Buffer:	PBS
Handling Advice:	Avoid repeated freeze/thaw cycles. Dilute only prior to immediate use.
Storage:	4 °C/-20 °C
Storage Comment:	Store at 2-8 °C for short periods. For longer periods of storage, store at -20 °C.



### Western Blotting

**Image 1.** EXOSC3 antibody used at 2.5 ug/ml to detect target protein.



### Immunohistochemistry

**Image 2.** EXOSC3 antibody was used for immunohistochemistry at a concentration of 4-8 ug/ml to stain Epithelial cells of renal tubule (arrows) in Human Kidney. Magnification is at 400X