

Datasheet for ABIN629921 **anti-UPF3B antibody**

2 Images



[Go to Product page](#)

Overview

Quantity:	100 µg
Target:	UPF3B
Reactivity:	Human, Dog
Host:	Rabbit
Clonality:	Polyclonal
Conjugate:	This UPF3B antibody is un-conjugated
Application:	Western Blotting (WB), Immunohistochemistry (IHC)

Product Details

Immunogen:	UPF3 B antibody was raised using a synthetic peptide corresponding to a region with amino acids MKEEKEHRPKEKRVTLTPAGATGSGGGTSGDSSKGEDKQDRNKEKKEAL
Purification:	Purified

Target Details

Target:	UPF3B
Alternative Name:	UPF3B (UPF3B Products)
Background:	UPF3B is part of a post-splicing multiprotein complex involved in both mRNA nuclear export and mRNA surveillance. The protein is one of two functional homologs to yeast Upf3p. This protein binds to the mRNA and remains bound after nuclear export, acting as a nucleocytoplasmic shuttling protein. It forms with Y14 a complex that binds specifically 20 nt upstream of exon-exon junctions.

Target Details

Molecular Weight: 52 kDa (MW of target protein)

Application Details

Application Notes: WB: 1.25 µg/mL, IHC: 4-8 µg/mL
Optimal conditions should be determined by the investigator.

Comment: UPF3B Blocking Peptide, catalog no. 33R-6132, is also available for use as a blocking control in assays to test for specificity of this UPF3B antibody

Restrictions: For Research Use only

Handling

Format: Lyophilized

Reconstitution: Lyophilized powder. Add distilled water for a 1 mg/mL concentration of UPF0 antibody in PBS

Concentration: Lot specific

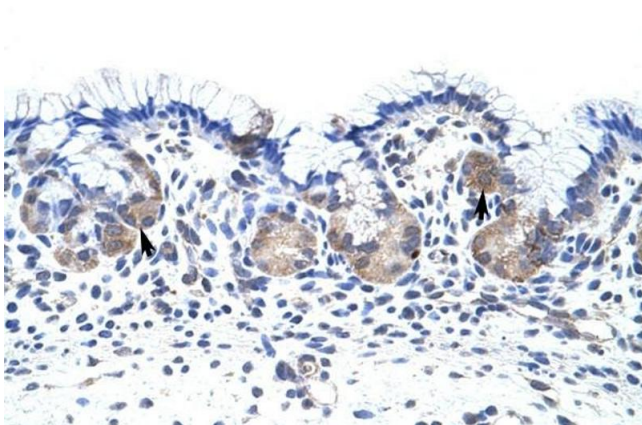
Buffer: PBS

Handling Advice: Avoid repeated freeze/thaw cycles.

Storage: 4 °C/-20 °C

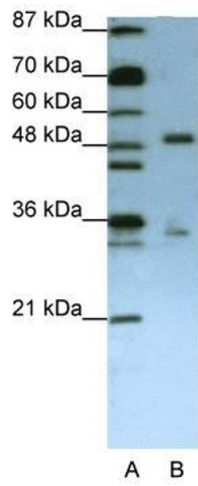
Storage Comment: Store at 2-8 °C for short periods. For longer periods of storage, store at -20 °C.

Images



Immunohistochemistry

Image 1. UPF3B antibody was used for immunohistochemistry at a concentration of 4-8 µg/ml to stain Epithelial cells of fundic gland (arrows) in Human Stomach. Magnification is at 400X



Western Blotting

Image 2. UPF3B antibody used at 1.25 ug/ml to detect target protein.