

Datasheet for ABIN629924 **anti-CPSF3 antibody (C-Term)**

2 Images



[Go to Product page](#)

Overview

| | |
|----------------------|---|
| Quantity: | 100 µg |
| Target: | CPSF3 |
| Binding Specificity: | C-Term |
| Reactivity: | Human |
| Host: | Rabbit |
| Clonality: | Polyclonal |
| Conjugate: | This CPSF3 antibody is un-conjugated |
| Application: | Western Blotting (WB), Immunohistochemistry (IHC) |

Product Details

| | |
|---------------|---|
| Immunogen: | CPSF3 antibody was raised using the C terminal of CPSF3 corresponding to a region with amino acids DDSILSVTVDGKTANLNLETRTVECEESEDDSLREMVELAAQRLYEAL |
| Specificity: | CPSF3 antibody was raised against the C terminal of CPSF3 |
| Purification: | Purified |

Target Details

| | |
|-------------------|--|
| Target: | CPSF3 |
| Alternative Name: | CPSF3 (CPSF3 Products) |
| Background: | CPSF3 belongs to the RNA-metabolizing metallo-beta-lactamase-like family, CPSF3 subfamily. It is component of the cleavage and polyadenylation specificity factor (CPSF) complex that play a key role in pre-mRNA 3'-end formation, recognizing the AAUAAA signal sequence and |

Target Details

interacting with poly(A) polymerase and other factors to bring about cleavage and poly(A) addition.

Molecular Weight: 75 kDa (MW of target protein)

Application Details

Application Notes: WB: 1.25 µg/mL, IHC: 4-8 µg/mL
Optimal conditions should be determined by the investigator.

Comment: CPSF3 Blocking Peptide, catalog no. 33R-1889, is also available for use as a blocking control in assays to test for specificity of this CPSF3 antibody

Restrictions: For Research Use only

Handling

Format: Lyophilized

Reconstitution: Lyophilized powder. Add distilled water for a 1 mg/mL concentration of CPSF3 antibody in PBS

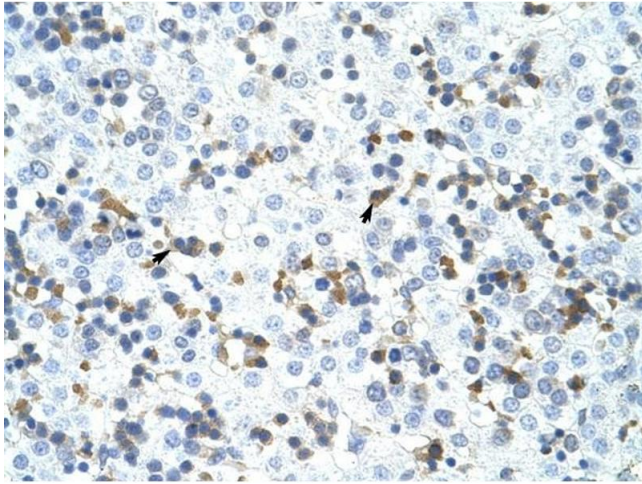
Concentration: Lot specific

Buffer: PBS

Handling Advice: Avoid repeated freeze/thaw cycles.
Dilute only prior to immediate use.

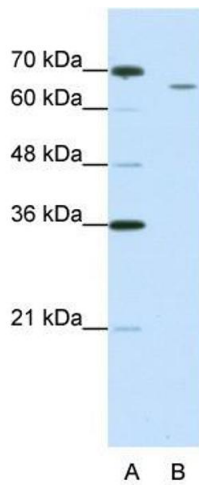
Storage: 4 °C/-20 °C

Storage Comment: Store at 2-8 °C for short periods. For longer periods of storage, store at -20 °C.



Immunohistochemistry

Image 1. CPSF3 antibody was used for immunohistochemistry at a concentration of 4-8 ug/ml to stain Liver cell (arrows) in Human Liver. Magnification is at 400X



Western Blotting

Image 2. CPSF3 antibody used at 1.25 ug/ml to detect target protein.