

Datasheet for ABIN629926
anti-EIF4H antibody (Middle Region)



[Go to Product page](#)

2 Images

Overview

Quantity:	100 µg
Target:	EIF4H
Binding Specificity:	Middle Region
Reactivity:	Human, Dog
Host:	Rabbit
Clonality:	Polyclonal
Conjugate:	This EIF4H antibody is un-conjugated
Application:	Western Blotting (WB), Immunohistochemistry (IHC)

Product Details

Immunogen:	WBSCR1 antibody was raised using the middle region of Wbscr1 corresponding to a region with amino acids DSRDDFNSGFRDDFLGGRGGSRPGDRRTGPPMGSFRFDGPPLRGSNMDFR
Specificity:	WBSCR1 antibody was raised against the middle region of Wbscr1
Purification:	Purified

Target Details

Target:	EIF4H
Alternative Name:	WBSCR1 (EIF4H Products)
Background:	WBSCR1 is one of the translation initiation factors, which functions to stimulate the initiation of protein synthesis at the level of mRNA utilization.

Target Details

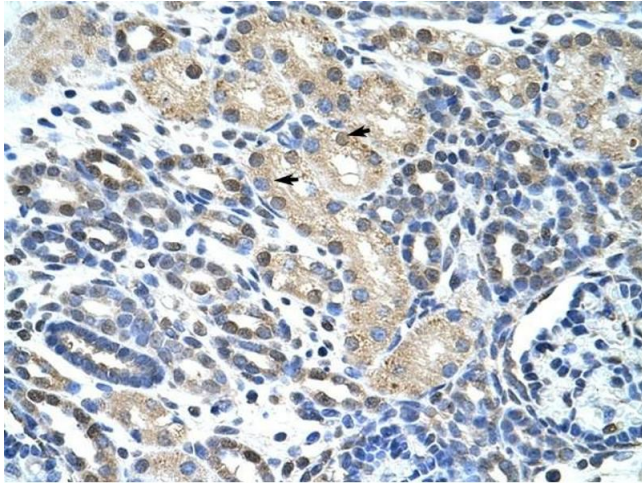
Molecular Weight:	27 kDa (MW of target protein)
Pathways:	SARS-CoV-2 Protein Interactome

Application Details

Application Notes:	WB: 2.5 µg/mL, IHC: 4-8 µg/mL Optimal conditions should be determined by the investigator.
Comment:	WBSCR1 Blocking Peptide, catalog no. 33R-2178, is also available for use as a blocking control in assays to test for specificity of this WBSCR1 antibody
Restrictions:	For Research Use only

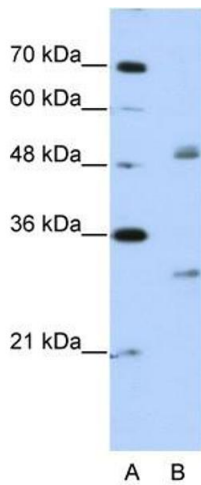
Handling

Format:	Lyophilized
Reconstitution:	Lyophilized powder. Add distilled water for a 1 mg/mL concentration of WBSCR1 antibody in PBS
Concentration:	Lot specific
Buffer:	PBS
Handling Advice:	Avoid repeated freeze/thaw cycles. Dilute only prior to immediate use.
Storage:	4 °C/-20 °C
Storage Comment:	Store at 2-8 °C for short periods. For longer periods of storage, store at -20 °C.



Immunohistochemistry

Image 1. WBSR1 antibody was used for immunohistochemistry at a concentration of 4-8 ug/ml to stain Epithelial cells of renal tubule (arrows) in Human Kidney. Magnification is at 400X



Western Blotting

Image 2. WBSR1 antibody used at 2.5 ug/ml to detect target protein.