

Datasheet for ABIN629934  
**anti-HNRNPF antibody (C-Term)**



[Go to Product page](#)

2 Images

## Overview

Quantity:	100 µg
Target:	HNRNPF
Binding Specificity:	C-Term
Reactivity:	Human, Mouse, Rat
Host:	Rabbit
Clonality:	Polyclonal
Conjugate:	This HNRNPF antibody is un-conjugated
Application:	Western Blotting (WB), Immunohistochemistry (IHC)

## Product Details

Immunogen:	HNRPF antibody was raised using the C terminal of HNRPF corresponding to a region with amino acids LNSTTGASNGAYSSQVMQGMGVSAQAQATYSGLESQSVSGCYGAGYSGQNS
Specificity:	HNRPF antibody was raised against the C terminal of HNRPF
Purification:	Purified

## Target Details

Target:	HNRNPF
Alternative Name:	HNRPF ( <a href="#">HNRNPF Products</a> )
Background:	HNRPF belongs to the subfamily of ubiquitously expressed heterogeneous nuclear ribonucleoproteins (hnRNPs). The hnRNPs are RNA binding proteins and they complex with heterogeneous nuclear RNA (hnRNA). These proteins are associated with pre-mRNAs in the

## Target Details

---

nucleus and appear to influence pre-mRNA processing and other aspects of mRNA metabolism and transport. While all of the hnRNPs are present in the nucleus, some seem to shuttle between the nucleus and the cytoplasm. The hnRNP proteins have distinct nucleic acid binding properties.

Molecular Weight: 46 kDa (MW of target protein)

## Application Details

---

Application Notes: WB: 1.25 µg/mL, IHC: 4-8 µg/mL  
Optimal conditions should be determined by the investigator.

Comment: HNRPF Blocking Peptide, catalog no. 33R-5245, is also available for use as a blocking control in assays to test for specificity of this HNRPF antibody

Restrictions: For Research Use only

## Handling

---

Format: Lyophilized

Reconstitution: Lyophilized powder. Add distilled water for a 1 mg/mL concentration of HNRPF antibody in PBS

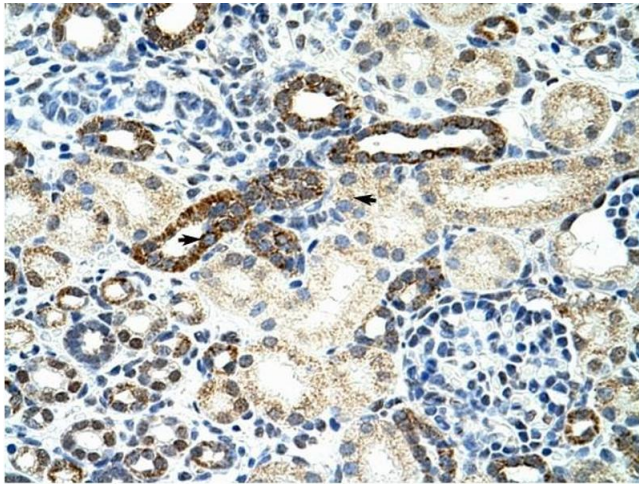
Concentration: Lot specific

Buffer: PBS

Handling Advice: Avoid repeated freeze/thaw cycles.  
Dilute only prior to immediate use.

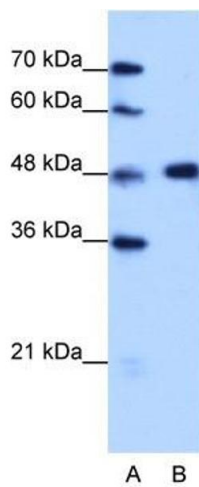
Storage: 4 °C/-20 °C

Storage Comment: Store at 2-8 °C for short periods. For longer periods of storage, store at -20 °C.



### Immunohistochemistry

**Image 1.** HNRPF antibody was used for immunohistochemistry at a concentration of 4-8 ug/ml to stain Epithelial cells of renal tubule (arrows! in Human Kidney. Magnification is at 400X



### Western Blotting

**Image 2.** HNRPF antibody used at 1.25 ug/ml to detect target protein.