

Datasheet for ABIN629935 **anti-RBM8A antibody (N-Term)**



[Go to Product page](#)

2 Images

Overview

Quantity:	100 µg
Target:	RBM8A
Binding Specificity:	N-Term
Reactivity:	Human, Rat, Mouse, Zebrafish (Danio rerio), Dog
Host:	Rabbit
Clonality:	Polyclonal
Conjugate:	This RBM8A antibody is un-conjugated
Application:	Western Blotting (WB), Immunohistochemistry (IHC)

Product Details

Immunogen:	RBM8 A antibody was raised using the N terminal of RBM8 corresponding to a region with amino acids LHEAGGEDFAMDEDGDSESIHKLKEKAKKRKGRGFGSEEGSRARMREDYDS
Specificity:	RBM8 A antibody was raised against the N terminal of RBM8
Purification:	Purified

Target Details

Target:	RBM8A
Alternative Name:	RBM8A (RBM8A Products)
Background:	RBM8A is a protein with a conserved RNA-binding motif. The protein is found predominantly in the nucleus, although it is also present in the cytoplasm. It is preferentially associated with mRNAs produced by splicing, including both nuclear mRNAs and newly exported cytoplasmic

Target Details

mRNAs. It is thought that the protein remains associated with spliced mRNAs as a tag to indicate where introns had been present, thus coupling pre- and post-mRNA splicing events.

Molecular Weight: 19 kDa (MW of target protein)

Application Details

Application Notes: WB: 1.25 µg/mL, IHC: 4-8 µg/mL
Optimal conditions should be determined by the investigator.

Comment: RBM8A Blocking Peptide, catalog no. 33R-5009, is also available for use as a blocking control in assays to test for specificity of this RBM8A antibody

Restrictions: For Research Use only

Handling

Format: Lyophilized

Reconstitution: Lyophilized powder. Add distilled water for a 1 mg/mL concentration of RBM0 antibody in PBS

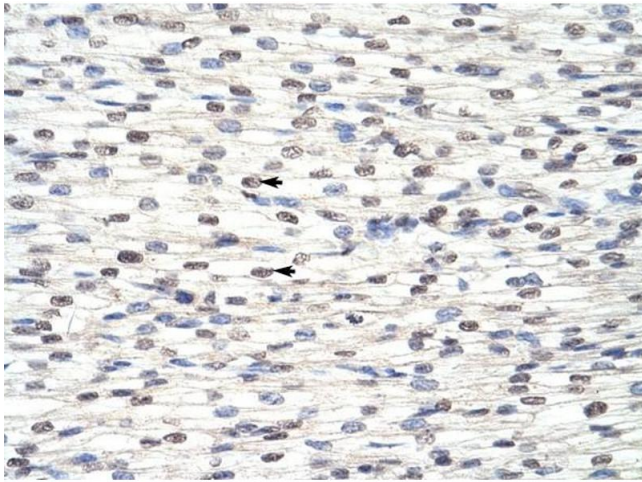
Concentration: Lot specific

Buffer: PBS

Handling Advice: Avoid repeated freeze/thaw cycles.
Dilute only prior to immediate use.

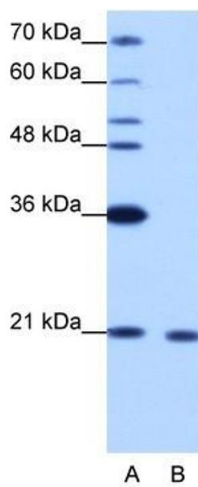
Storage: 4 °C/-20 °C

Storage Comment: Store at 2-8 °C for short periods. For longer periods of storage, store at -20 °C.



Immunohistochemistry

Image 1. RBM8A antibody was used for immunohistochemistry at a concentration of 4-8 ug/ml to stain Myocardial cells (arrows) in Human Heart. Magnification is at 400X



Western Blotting

Image 2. RBM8A antibody used at 1.25 ug/ml to detect target protein.