

Datasheet for ABIN629937 **anti-NXF3 antibody (C-Term)**

3 Images



[Go to Product page](#)

Overview

Quantity:	100 µg
Target:	NXF3
Binding Specificity:	C-Term
Reactivity:	Human
Host:	Rabbit
Clonality:	Polyclonal
Conjugate:	This NXF3 antibody is un-conjugated
Application:	Western Blotting (WB), Immunohistochemistry (IHC)

Product Details

Immunogen:	NXF3 antibody was raised using the C terminal of NXF3 corresponding to a region with amino acids SSFLVDMWYQTEWMLCFVNGVFKEVEGQSQGSVLAFTRTFIATPGSSSS
Specificity:	NXF3 antibody was raised against the C terminal of NXF3
Purification:	Purified

Target Details

Target:	NXF3
Alternative Name:	NXF3 (NXF3 Products)
Background:	NXF3 is one member of a family of nuclear RNA export factors. Common domain features of this family are a noncanonical RNP-type RNA-binding domain (RBD), 4 leucine-rich repeats (LRRs), a nuclear transport factor 2 (NTF2)-like domain that allows heterodimerization with

Target Details

NTF2-related export protein-1 (NXT1), and a ubiquitin-associated domain that mediates interactions with nucleoporins. The LRRs and NTF2-like domains are required for export activity. NXF3 has shortened LRR and ubiquitin-associated domains and its RDB is unable to bind RNA. It is located in the nucleoplasm but is not associated with either the nuclear envelope or the nucleolus.

Molecular Weight: 58 kDa (MW of target protein)

Application Details

Application Notes: WB: 1.25 µg/mL, IHC: 4-8 µg/mL
Optimal conditions should be determined by the investigator.

Comment: NXF3 Blocking Peptide, catalog no. 33R-8801, is also available for use as a blocking control in assays to test for specificity of this NXF3 antibody

Restrictions: For Research Use only

Handling

Format: Lyophilized

Reconstitution: Lyophilized powder. Add distilled water for a 1 mg/mL concentration of NXF3 antibody in PBS

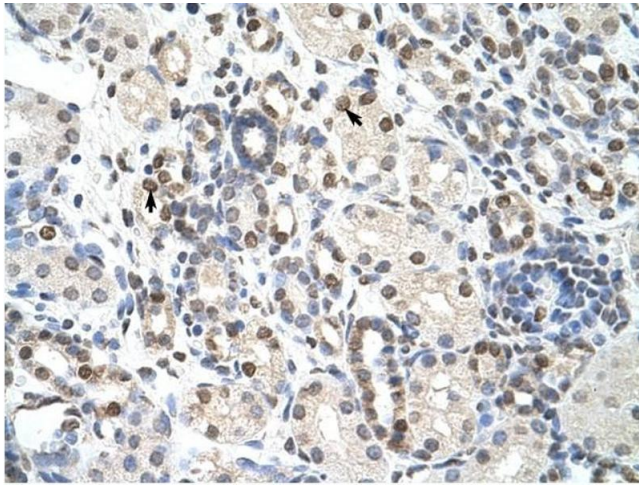
Concentration: Lot specific

Buffer: PBS

Handling Advice: Avoid repeated freeze/thaw cycles.
Dilute only prior to immediate use.

Storage: 4 °C/-20 °C

Storage Comment: Store at 2-8 °C for short periods. For longer periods of storage, store at -20 °C.



Immunohistochemistry

Image 1. NXF3 antibody was used for immunohistochemistry at a concentration of 4-8 ug/ml to stain Epithelial cells of renal tubule (arrows) in Human Kidney. Magnification is at 400X



Immunohistochemistry

Image 2. NXF3 antibody was used for immunohistochemistry at a concentration of 4-8 ug/ml to stain Myocardial cells (arrows) in Human Heart. Magnification is at 400X.



Western Blotting

Image 3. NXF3 antibody used at 1.25 ug/ml to detect target protein.