

Datasheet for ABIN629943
anti-NOVA2 antibody (Middle Region)



[Go to Product page](#)

1 Image

Overview

| | |
|----------------------|--------------------------------------|
| Quantity: | 100 µg |
| Target: | NOVA2 |
| Binding Specificity: | Middle Region |
| Reactivity: | Human, Mouse, Rat, Dog |
| Host: | Rabbit |
| Clonality: | Polyclonal |
| Conjugate: | This NOVA2 antibody is un-conjugated |
| Application: | Western Blotting (WB) |

Product Details

| | |
|---------------|--|
| Immunogen: | NOVA2 antibody was raised using the middle region of NOVA2 corresponding to a region with amino acids EPEQVHKAVSAIVQKVQEDPQSSSCLNISYANVAGPVANSNPTGSPYASP |
| Specificity: | NOVA2 antibody was raised against the middle region of NOVA2 |
| Purification: | Purified |

Target Details

| | |
|-------------------|---|
| Target: | NOVA2 |
| Alternative Name: | NOVA2 (NOVA2 Products) |
| Background: | NOVA2 may regulate RNA splicing or metabolism in a specific subset of developing neurons. It binds single strand RNA. |

Target Details

Molecular Weight: 54 kDa (MW of target protein)

Application Details

Application Notes: WB: 2.5 µg/mL
Optimal conditions should be determined by the investigator.

Comment: NOVA2 Blocking Peptide, catalog no. 33R-2631, is also available for use as a blocking control in assays to test for specificity of this NOVA2 antibody

Restrictions: For Research Use only

Handling

Format: Lyophilized

Reconstitution: Lyophilized powder. Add distilled water for a 1 mg/mL concentration of NOVA2 antibody in PBS

Concentration: Lot specific

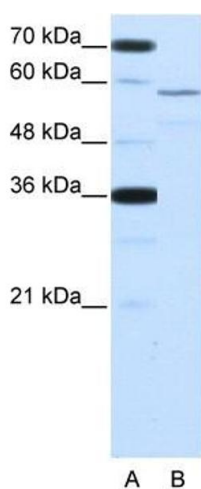
Buffer: PBS

Handling Advice: Avoid repeated freeze/thaw cycles.
Dilute only prior to immediate use.

Storage: 4 °C/-20 °C

Storage Comment: Store at 2-8 °C for short periods. For longer periods of storage, store at -20 °C.

Images



Western Blotting

Image 1. NOVA2 antibody used at 2.5 µg/ml to detect target protein.