

Datasheet for ABIN629947 **anti-TARBP2 antibody**



[Go to Product page](#)

1 Image

Overview

Quantity:	100 µg
Target:	TARBP2
Reactivity:	Human, Mouse, Rat, Zebrafish (Danio rerio)
Host:	Rabbit
Clonality:	Polyclonal
Conjugate:	This TARBP2 antibody is un-conjugated
Application:	Western Blotting (WB)

Product Details

Immunogen:	TARBP2 antibody was raised using a synthetic peptide corresponding to a region with amino acids ANPGKTPISLLQEYGRIGKTPVYDLLKAEGQAHQPNFTFRVTVGDTSC
Purification:	Purified

Target Details

Target:	TARBP2
Alternative Name:	TARBP2 (TARBP2 Products)
Background:	HIV-1, the causative agent of acquired immunodeficiency syndrome (AIDS), contains an RNA genome that produces a chromosomally integrated DNA during the replicative cycle. Activation of HIV-1 gene expression by the transactivator Tat is dependent on an RNA regulatory element (TAR) located downstream of the transcription initiation site. TARBP2 binds between the bulge and the loop of the HIV-1 TAR RNA regulatory element and activates HIV-1 gene expression in

Target Details

synergy with the viral Tat protein.

Molecular Weight: 8 kDa (MW of target protein)

Pathways: [Regulatory RNA Pathways](#), [Ribonucleoprotein Complex Subunit Organization](#)

Application Details

Application Notes: WB: 2.5 µg/mL
Optimal conditions should be determined by the investigator.

Comment: TARBP2 Blocking Peptide, catalog no. 33R-1405, is also available for use as a blocking control in assays to test for specificity of this TARBP2 antibody

Restrictions: For Research Use only

Handling

Format: Lyophilized

Reconstitution: Lyophilized powder. Add distilled water for a 1 mg/mL concentration of TARBP2 antibody in PBS

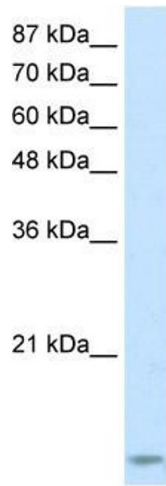
Concentration: Lot specific

Buffer: PBS

Handling Advice: Avoid repeated freeze/thaw cycles.

Storage: 4 °C/-20 °C

Storage Comment: Store at 2-8 °C for short periods. For longer periods of storage, store at -20 °C.



Western Blotting

Image 1. TARBP2 antibody used at 2.5 ug/ml to detect target protein.