

Datasheet for ABIN629948 **anti-PAIP1 antibody**

3 Images



[Go to Product page](#)

Overview

Quantity:	100 µg
Target:	PAIP1
Reactivity:	Human, Mouse, Rat, Dog
Host:	Rabbit
Clonality:	Polyclonal
Conjugate:	This PAIP1 antibody is un-conjugated
Application:	Western Blotting (WB), Immunohistochemistry (IHC)

Product Details

Immunogen:	PAIP1 antibody was raised using a synthetic peptide corresponding to a region with amino acids EPTFYTSDGVPFTAADPDYQEKYQELLEREDFFPDYEENGTDLSGAGDPY
Purification:	Purified

Target Details

Target:	PAIP1
Alternative Name:	PAIP1 (PAIP1 Products)
Background:	PAIP1 interacts with poly(A)-binding protein and with the cap-binding complex eIF4A. It is involved in translational initiation and protein biosynthesis. Overexpression of this gene in COS7 cells stimulates translation.
Molecular Weight:	44 kDa (MW of target protein)

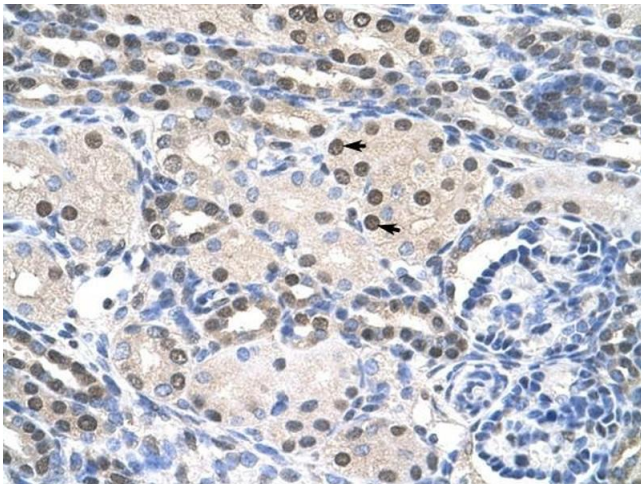
Application Details

Application Notes:	WB: 1.25 µg/mL, IHC: 4-8 µg/mL Optimal conditions should be determined by the investigator.
Comment:	PAIP1 Blocking Peptide, catalog no. 33R-2650, is also available for use as a blocking control in assays to test for specificity of this PAIP1 antibody
Restrictions:	For Research Use only

Handling

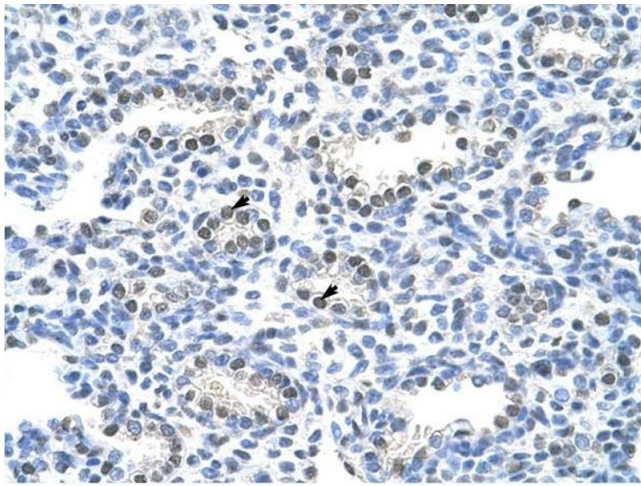
Format:	Lyophilized
Reconstitution:	Lyophilized powder. Add distilled water for a 1 mg/mL concentration of PAIP1 antibody in PBS
Concentration:	Lot specific
Buffer:	PBS
Handling Advice:	Avoid repeated freeze/thaw cycles.
Storage:	4 °C/-20 °C
Storage Comment:	Store at 2-8 °C for short periods. For longer periods of storage, store at -20 °C.

Images



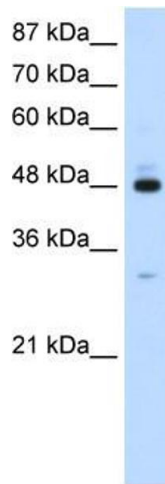
Immunohistochemistry

Image 1. PAIP1 antibody was used for immunohistochemistry at a concentration of 4-8 ug/ml to stain Epithelial cells of renal tubule (arrows) in Human Kidney. Magnification is at 400X



Immunohistochemistry

Image 2. PAIP1 antibody was used for immunohistochemistry at a concentration of 4-8 ug/ml to stain Alveolar cells (arrows) in Human Lung. Magnification is at 400X.



Western Blotting

Image 3. PAIP1 antibody used at 1.25 ug/ml to detect target protein.