

Datasheet for ABIN629949
anti-GRSF1 antibody (N-Term)



[Go to Product page](#)

1 Image

Overview

Quantity:	100 µg
Target:	GRSF1
Binding Specificity:	N-Term
Reactivity:	Human
Host:	Rabbit
Clonality:	Polyclonal
Conjugate:	This GRSF1 antibody is un-conjugated
Application:	Western Blotting (WB)

Product Details

Immunogen:	GRSF1 antibody was raised using the N terminal of GRSF1 corresponding to a region with amino acids SCRRTGAACLPFYSAASYPALRASLLPQSLAAAAVPTRSYSQESKTTYL
Specificity:	GRSF1 antibody was raised against the N terminal of GRSF1
Purification:	Purified

Target Details

Target:	GRSF1
Alternative Name:	GRSF1 (GRSF1 Products)
Background:	GRSF1 is a cellular protein that binds RNAs containing the G-rich element. Using indirect immunofluorescence microscopy this protein was found to be localized in the cytoplasm.

Target Details

Molecular Weight: 47 kDa (MW of target protein)

Application Details

Application Notes: WB: 2.5 µg/mL
Optimal conditions should be determined by the investigator.

Comment: GRSF1 Blocking Peptide, catalog no. 33R-8338, is also available for use as a blocking control in assays to test for specificity of this GRSF1 antibody

Restrictions: For Research Use only

Handling

Format: Lyophilized

Reconstitution: Lyophilized powder. Add distilled water for a 1 mg/mL concentration of GRSF1 antibody in PBS

Concentration: Lot specific

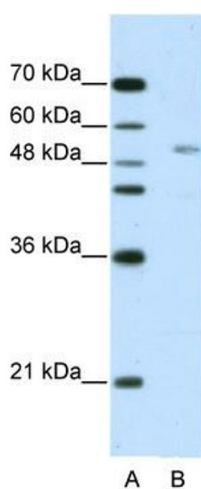
Buffer: PBS

Handling Advice: Avoid repeated freeze/thaw cycles.
Dilute only prior to immediate use.

Storage: 4 °C/-20 °C

Storage Comment: Store at 2-8 °C for short periods. For longer periods of storage, store at -20 °C.

Images



Western Blotting

Image 1. GRSF1 antibody used at 2.5 ug/ml to detect target protein.