

Datasheet for ABIN629951

**anti-PCBP2 antibody****2** Images[Go to Product page](#)

## Overview

Quantity:	100 µg
Target:	PCBP2
Reactivity:	Human, Mouse, Rat, Dog
Host:	Rabbit
Clonality:	Polyclonal
Conjugate:	This PCBP2 antibody is un-conjugated
Application:	Western Blotting (WB), Immunohistochemistry (IHC)

## Product Details

Immunogen:	PCBP2 antibody was raised using a synthetic peptide corresponding to a region with amino acids VIFAGGQDRYSTGSDSASFPHHTPSMCLNPDLEGPPLEAYTIQGQYAI PQ
Purification:	Purified

## Target Details

Target:	PCBP2
Alternative Name:	PCBP2 ( <a href="#">PCBP2 Products</a> )
Background:	PCBP2 appears to be multifunctional. It along with PCBP-1 and hnRNPk corresponds to the major cellular poly(rC)-binding proteins. This protein together with PCBP-1 also functions as translational coactivators of poliovirus RNA via a sequence-specific interaction with stem-loop IV of the IRES and promote poliovirus RNA replication by binding to its 5'-terminal cloverleaf structure. It has also been implicated in translational control of the 15-lipoxygenase mRNA,

## Target Details

---

human Papillomavirus type 16 L2 mRNA, and hepatitis A virus RNA. The protein is also suggested to play a part in formation of a sequence-specific alpha-globin mRNP complex which is associated with alpha-globin mRNA stability.

Molecular Weight: 40 kDa (MW of target protein)

## Application Details

---

Application Notes: WB: 1.25 µg/mL, IHC: 4-8 µg/mL  
Optimal conditions should be determined by the investigator.

Comment: PCBP2 Blocking Peptide, catalog no. 33R-9591, is also available for use as a blocking control in assays to test for specificity of this PCBP2 antibody

Restrictions: For Research Use only

## Handling

---

Format: Lyophilized

Reconstitution: Lyophilized powder. Add distilled water for a 1 mg/mL concentration of PCBP2 antibody in PBS

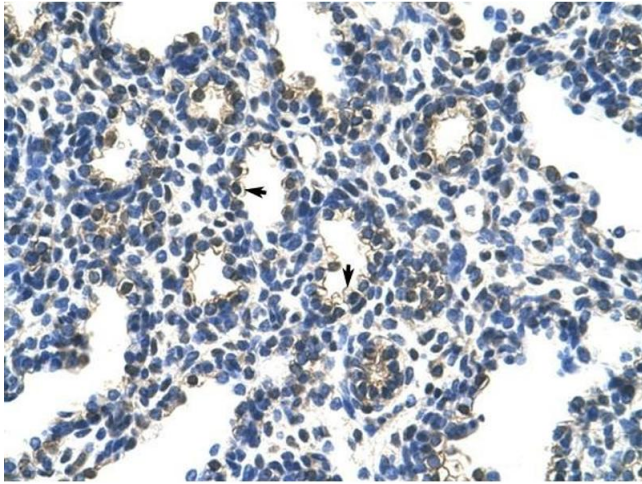
Concentration: Lot specific

Buffer: PBS

Handling Advice: Avoid repeated freeze/thaw cycles.

Storage: 4 °C/-20 °C

Storage Comment: Store at 2-8 °C for short periods. For longer periods of storage, store at -20 °C.



### Immunohistochemistry

**Image 1.** PCBP2 antibody was used for immunohistochemistry at a concentration of 4-8 ug/ml to stain Alveolar cells (arrows) in Human Lung. Magnification is at 400X



### Western Blotting

**Image 2.** PCBP2 antibody used at 1.25 ug/ml to detect target protein.