

## Datasheet for ABIN629958 **anti-DDX27 antibody**



[Go to Product page](#)

### 1 Image

#### Overview

Quantity:	100 µg
Target:	DDX27
Reactivity:	Human, Dog
Host:	Rabbit
Clonality:	Polyclonal
Conjugate:	This DDX27 antibody is un-conjugated
Application:	Western Blotting (WB)

#### Product Details

Immunogen:	DDX27 antibody was raised using a synthetic peptide corresponding to a region with amino acids DEKIEKVRKKRKTEDKEAKSGKLEKEKEAKEGSEPKEQEDLQENDEEGSE
Purification:	Purified

#### Target Details

Target:	DDX27
Alternative Name:	DDX27 ( <a href="#">DDX27 Products</a> )
Background:	DEAD box proteins, characterized by the conserved motif Asp-Glu-Ala-Asp (DEAD), are putative RNA helicases. They are implicated in a number of cellular processes involving alteration of RNA secondary structure such as translation initiation, nuclear and mitochondrial splicing, and ribosome and spliceosome assembly. Based on their distribution patterns, some members of this family are believed to be involved in embryogenesis, spermatogenesis, and cellular growth

## Target Details

and division. DDX27 is a DEAD box protein, the function of which has not been determined.

Molecular Weight: 88 kDa (MW of target protein)

## Application Details

Application Notes: WB: 0.625 µg/mL  
Optimal conditions should be determined by the investigator.

Comment: DDX27 Blocking Peptide, catalog no. 33R-1907, is also available for use as a blocking control in assays to test for specificity of this DDX27 antibody

Restrictions: For Research Use only

## Handling

Format: Lyophilized

Reconstitution: Lyophilized powder. Add distilled water for a 1 mg/mL concentration of DDX27 antibody in PBS

Concentration: Lot specific

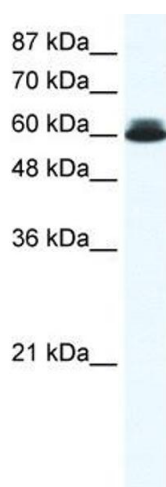
Buffer: PBS

Handling Advice: Avoid repeated freeze/thaw cycles.

Storage: 4 °C/-20 °C

Storage Comment: Store at 2-8 °C for short periods. For longer periods of storage, store at -20 °C.

## Images



### Western Blotting

**Image 1.** DDX27 antibody used at 0.625 µg/ml to detect target protein.