

Datasheet for ABIN629961 **anti-DDX19B antibody**



[Go to Product page](#)

1 Image

Overview

Quantity:	100 µg
Target:	DDX19B
Reactivity:	Human, Mouse, Rat, Zebrafish (Danio rerio), Dog
Host:	Rabbit
Clonality:	Polyclonal
Conjugate:	This DDX19B antibody is un-conjugated
Application:	Western Blotting (WB)

Product Details

Immunogen:	DDX19 B antibody was raised using a synthetic peptide corresponding to a region with amino acids GKEKVLVTTNVCARGIDVEQSVVINFDLPVDKDGNDNETYLHRIGRTG
Purification:	Purified

Target Details

Target:	DDX19B
Alternative Name:	DDX19B (DDX19B Products)
Background:	DEAD box proteins, characterized by the conserved motif Asp-Glu-Ala-Asp (DEAD), are putative RNA helicases. They are implicated in a number of cellular processes involving alteration of RNA secondary structure such as translation initiation, nuclear and mitochondrial splicing, and ribosome and spliceosome assembly. Based on their distribution patterns, some members of this family are believed to be involved in embryogenesis, spermatogenesis, and cellular growth

Target Details

and division. DDX19B is a DEAD box protein, which exhibits RNA-dependent ATPase and ATP-dependent RNA-unwinding activities.

Molecular Weight: 53 kDa (MW of target protein)

Application Details

Application Notes: WB: 2.5 µg/mL
Optimal conditions should be determined by the investigator.

Comment: DDX19B Blocking Peptide, catalog no. 33R-3358, is also available for use as a blocking control in assays to test for specificity of this DDX19B antibody

Restrictions: For Research Use only

Handling

Format: Lyophilized

Reconstitution: Lyophilized powder. Add distilled water for a 1 mg/mL concentration of DDX10 antibody in PBS

Concentration: Lot specific

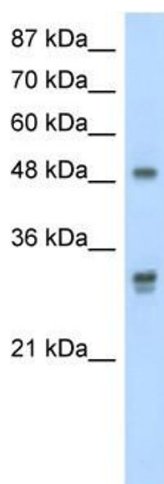
Buffer: PBS

Handling Advice: Avoid repeated freeze/thaw cycles.

Storage: 4 °C/-20 °C

Storage Comment: Store at 2-8 °C for short periods. For longer periods of storage, store at -20 °C.

Images



Western Blotting

Image 1. DDX19B antibody used at 2.5 ug/ml to detect target protein.