

Datasheet for ABIN629962
anti-MATR3 antibody (N-Term)



[Go to Product page](#)

3 Images

Overview

Quantity:	100 µg
Target:	MATR3
Binding Specificity:	N-Term
Reactivity:	Human
Host:	Rabbit
Clonality:	Polyclonal
Conjugate:	This MATR3 antibody is un-conjugated
Application:	Western Blotting (WB), Immunohistochemistry (IHC)

Product Details

Immunogen:	Matrin 3 antibody was raised using the N terminal of MATR3 corresponding to a region with amino acids MSKSFQSSLSRDSQGHGRDLSAAGIGLLAAATQSLSPASLGRMNQGTA
Specificity:	Matrin 3 antibody was raised against the N terminal of MATR3
Purification:	Purified

Target Details

Target:	MATR3
Alternative Name:	Matrin 3 (MATR3 Products)
Background:	MATR3 is localized in the nuclear matrix. It may play a role in transcription or may interact with other nuclear matrix proteins to form the internal fibrogranular network.

Target Details

Molecular Weight: 93 kDa (MW of target protein)

Application Details

Application Notes: WB: 1.25 µg/mL, IHC: 4-8 µg/mL
Optimal conditions should be determined by the investigator.

Comment: Matrin 3 Blocking Peptide, catalog no. 33R-6456, is also available for use as a blocking control in assays to test for specificity of this Matrin 3 antibody

Restrictions: For Research Use only

Handling

Format: Lyophilized

Reconstitution: Lyophilized powder. Add distilled water for a 1 mg/mL concentration of MATR3 antibody in PBS

Concentration: Lot specific

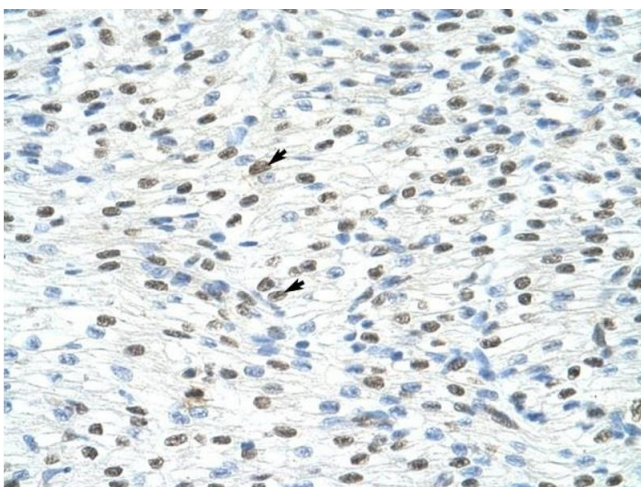
Buffer: PBS

Handling Advice: Avoid repeated freeze/thaw cycles.
Dilute only prior to immediate use.

Storage: 4 °C/-20 °C

Storage Comment: Store at 2-8 °C for short periods. For longer periods of storage, store at -20 °C.

Images



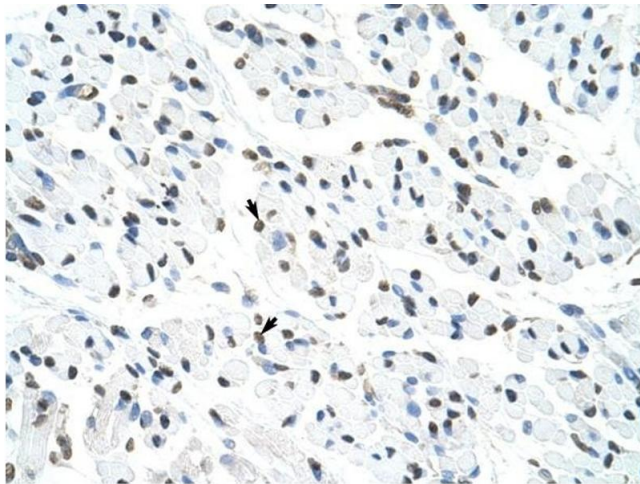
Immunohistochemistry

Image 1. Matrin 3 antibody was used for immunohistochemistry at a concentration of 4-8 µg/ml to stain Myocardial cells (arrows) in Human Heart. Magnification is at 400X.



Western Blotting

Image 2. Matrin 3 antibody used at 1.25 ug/ml to detect target protein.



Immunohistochemistry

Image 3. Matrin 3 antibody was used for immunohistochemistry at a concentration of 4-8 ug/ml to stain Skeletal muscle cells (arrows) in Human Muscle. Magnification is at 400X