

## Datasheet for ABIN629967 anti-MSI2 antibody

### 3 Images



[Go to Product page](#)

### Overview

Quantity:	100 µg
Target:	MSI2
Reactivity:	Human, Mouse, Rat, Zebrafish (Danio rerio), C. elegans
Host:	Rabbit
Clonality:	Polyclonal
Conjugate:	This MSI2 antibody is un-conjugated
Application:	Western Blotting (WB), Immunohistochemistry (IHC)

### Product Details

Immunogen:	MSI2 antibody was raised using a synthetic peptide corresponding to a region with amino acids LRDYFSKFGEIRECMVMRDPTTKRSRGGFVTFADPASVDKVLGQPHHEL
Purification:	Purified

### Target Details

Target:	MSI2
Alternative Name:	MSI2 ( <a href="#">MSI2 Products</a> )
Background:	MSI2 contains two conserved tandem RNA recognition motifs. Similar proteins in other species function as RNA-binding proteins and play central roles in posttranscriptional gene regulation.
Molecular Weight:	36 kDa (MW of target protein)

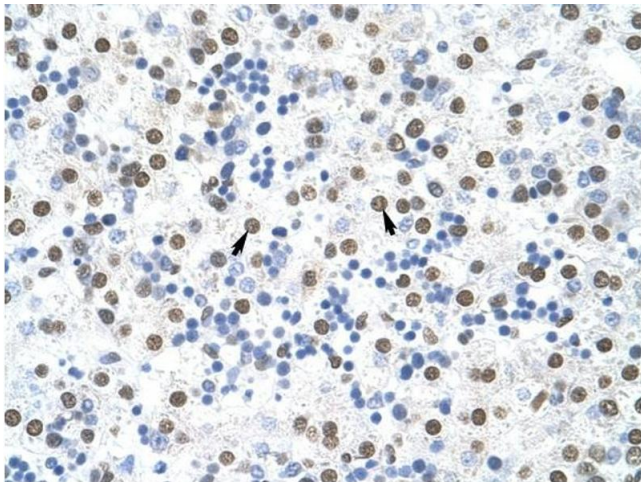
## Application Details

Application Notes:	WB: 1.25 µg/mL, IHC: 4-8 µg/mL Optimal conditions should be determined by the investigator.
Comment:	MSI2 Blocking Peptide, catalog no. 33R-5352, is also available for use as a blocking control in assays to test for specificity of this MSI2 antibody
Restrictions:	For Research Use only

## Handling

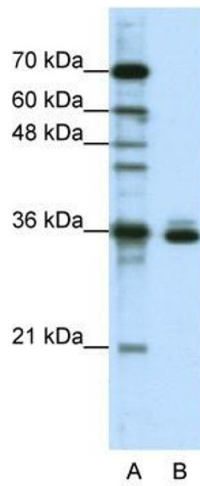
Format:	Lyophilized
Reconstitution:	Lyophilized powder. Add distilled water for a 1 mg/mL concentration of MSI2 antibody in PBS
Concentration:	Lot specific
Buffer:	PBS
Handling Advice:	Avoid repeated freeze/thaw cycles.
Storage:	4 °C/-20 °C
Storage Comment:	Store at 2-8 °C for short periods. For longer periods of storage, store at -20 °C.

## Images



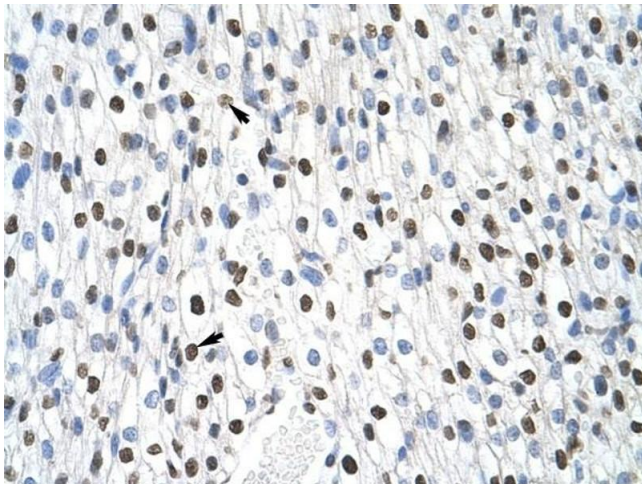
### Immunohistochemistry

**Image 1.** MSI2 antibody was used for immunohistochemistry at a concentration of 4-8 ug/ml to stain Hepatocytes (arrows) in Human Liver. Magnification is at 400X.



### Western Blotting

**Image 2.** MSI2 antibody used at 1.25 ug/ml to detect target protein.



### Immunohistochemistry

**Image 3.** MSI2 antibody was used for immunohistochemistry at a concentration of 4-8 ug/ml to stain Myocardial cells (arrows) in Human Heart. Magnification is at 400X