

## Datasheet for ABIN629968 **anti-CELF2 antibody (N-Term)**



[Go to Product page](#)

### 2 Images

#### Overview

Quantity:	100 µg
Target:	CELF2
Binding Specificity:	N-Term
Reactivity:	Human, Mouse, Rat, Zebrafish (Danio rerio), Dog
Host:	Rabbit
Clonality:	Polyclonal
Conjugate:	This CELF2 antibody is un-conjugated
Application:	Western Blotting (WB), Immunohistochemistry (IHC)

#### Product Details

Immunogen:	CUGBP2 antibody was raised using the N terminal of CUGBP2 corresponding to a region with amino acids VYQINVLDRSQNPPQSKGCCFVTFYTRKAALEAQNALHNIKTLPGMHHP
Specificity:	CUGBP2 antibody was raised against the N terminal of CUGBP2
Purification:	Purified

#### Target Details

Target:	CELF2
Alternative Name:	CUGBP2 ( <a href="#">CELF2 Products</a> )
Background:	Members of the CELF/BRUNOL protein family contain two N-terminal RNA recognition motif (RRM) domains, one C-terminal RRM domain, and a divergent segment of 160-230 aa between the second and third RRM domains. Members of this protein family regulate pre-mRNA

## Target Details

---

alternative splicing and may also be involved in mRNA editing, and translation.

Molecular Weight: 56 kDa (MW of target protein)

Pathways: [Ribonucleoprotein Complex Subunit Organization](#)

## Application Details

---

Application Notes: WB: 1.25 µg/mL, IHC: 4-8 µg/mL  
Optimal conditions should be determined by the investigator.

Comment: CUGBP2 Blocking Peptide, catalog no. 33R-9924, is also available for use as a blocking control in assays to test for specificity of this CUGBP2 antibody

Restrictions: For Research Use only

## Handling

---

Format: Lyophilized

Reconstitution: Lyophilized powder. Add distilled water for a 1 mg/mL concentration of CUGBP2 antibody in PBS

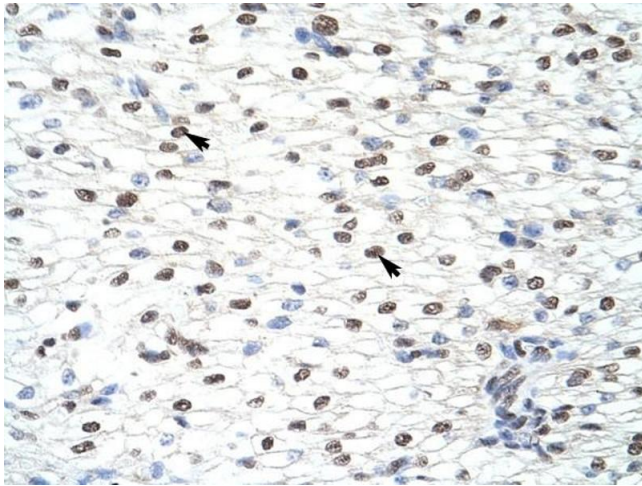
Concentration: Lot specific

Buffer: PBS

Handling Advice: Avoid repeated freeze/thaw cycles.  
Dilute only prior to immediate use.

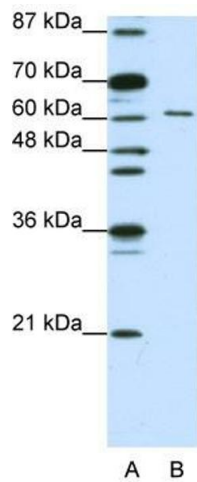
Storage: 4 °C/-20 °C

Storage Comment: Store at 2-8 °C for short periods. For longer periods of storage, store at -20 °C.



### Immunohistochemistry

**Image 1.** CUGBP2 antibody was used for immunohistochemistry at a concentration of 4-8 ug/ml to stain Myocardial cells (arrows) in Human Heart. Magnification is at 400X



### Western Blotting

**Image 2.** CUGBP2 antibody used at 1.25 ug/ml to detect target protein.