

Datasheet for ABIN629970

anti-DDX1 antibody**1** Image[Go to Product page](#)

Overview

Quantity:	100 µg
Target:	DDX1
Reactivity:	Human, Mouse, Rat, Dog
Host:	Rabbit
Clonality:	Polyclonal
Conjugate:	This DDX1 antibody is un-conjugated
Application:	Western Blotting (WB)

Product Details

Immunogen:	DDX1 antibody was raised using a synthetic peptide corresponding to a region with amino acids SQVEPDIKVPVDEFDGKVTYGQKRAAGGGSYKGHVDILAPTVQELAALEK
Purification:	Purified

Target Details

Target:	DDX1
Alternative Name:	DDX1 (DDX1 Products)
Background:	DEAD box proteins, characterized by the conserved motif Asp-Glu-Ala-Asp (DEAD), are putative RNA helicases. They are implicated in a number of cellular processes involving alteration of RNA secondary structure such as translation initiation, nuclear and mitochondrial splicing, and ribosome and spliceosome assembly. Based on their distribution patterns, some members of this family are believed to be involved in embryogenesis, spermatogenesis, and cellular growth

Target Details

and division. This gene encodes a DEAD box protein of unknown function. It shows high transcription levels in 2 retinoblastoma cell lines and in tissues of neuroectodermal origin.

Molecular Weight: 81 kDa (MW of target protein)

Pathways: [Ribonucleoprotein Complex Subunit Organization](#)

Application Details

Application Notes: WB: 1.25 µg/mL
Optimal conditions should be determined by the investigator.

Comment: DDX1 Blocking Peptide, catalog no. 33R-8730, is also available for use as a blocking control in assays to test for specificity of this DDX1 antibody

Restrictions: For Research Use only

Handling

Format: Lyophilized

Reconstitution: Lyophilized powder. Add distilled water for a 1 mg/mL concentration of DDX1 antibody in PBS

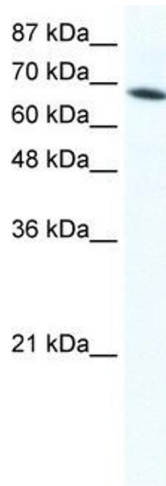
Concentration: Lot specific

Buffer: PBS

Handling Advice: Avoid repeated freeze/thaw cycles.

Storage: 4 °C/-20 °C

Storage Comment: Store at 2-8 °C for short periods. For longer periods of storage, store at -20 °C.



Western Blotting

Image 1. DDX1 antibody used at 1.25 ug/ml to detect target protein.