

Datasheet for ABIN629975
anti-EIF3G antibody (N-Term)



[Go to Product page](#)

2 Images

Overview

Quantity:	100 µg
Target:	EIF3G
Binding Specificity:	N-Term
Reactivity:	Human, Mouse, Rat, Dog
Host:	Rabbit
Clonality:	Polyclonal
Conjugate:	This EIF3G antibody is un-conjugated
Application:	Western Blotting (WB), Immunohistochemistry (IHC)

Product Details

Immunogen:	EIF3 S4 antibody was raised using the N terminal of EIF3 4 corresponding to a region with amino acids SPEPELLPGAPLPPPKEVINGNIKTVTVEYKIDEDGKKFKIVRTFRIETRK
Specificity:	EIF3 S4 antibody was raised against the N terminal of EIF3 4
Purification:	Purified

Target Details

Target:	EIF3G
Alternative Name:	EIF3S4 (EIF3G Products)
Background:	EIF3S4 contains 1 RRM (RNA recognition motif) domain. It binds to the 40S ribosome and promotes the binding of methionyl-tRNA _i and mRNA. This subunit binds to the 18S rRNA.

Target Details

Molecular Weight:	35 kDa (MW of target protein)
Pathways:	Ribonucleoprotein Complex Subunit Organization

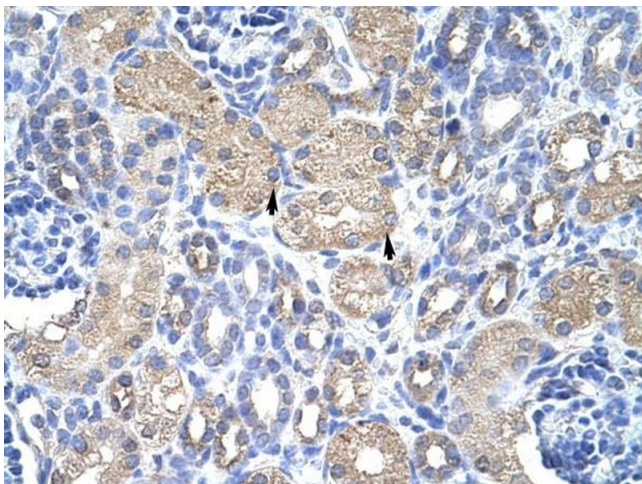
Application Details

Application Notes:	WB: 1.25 µg/mL, IHC: 4-8 µg/mL Optimal conditions should be determined by the investigator.
Comment:	EIF3S4 Blocking Peptide, catalog no. 33R-8672, is also available for use as a blocking control in assays to test for specificity of this EIF3S4 antibody
Restrictions:	For Research Use only

Handling

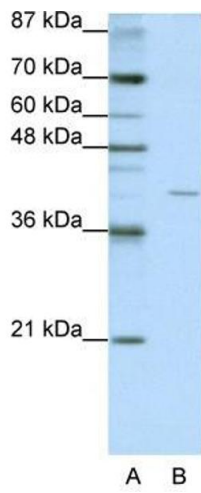
Format:	Lyophilized
Reconstitution:	Lyophilized powder. Add distilled water for a 1 mg/mL concentration of EIF0 4 antibody in PBS
Concentration:	Lot specific
Buffer:	PBS
Handling Advice:	Avoid repeated freeze/thaw cycles. Dilute only prior to immediate use.
Storage:	4 °C/-20 °C
Storage Comment:	Store at 2-8 °C for short periods. For longer periods of storage, store at -20 °C.

Images



Immunohistochemistry

Image 1. EIF3S4 antibody was used for immunohistochemistry at a concentration of 4-8 µg/ml to stain Epithelial cells of renal tubule (arrows) in Human Kidney. Magnification is at 400X



Western Blotting

Image 2. EIF3S4 antibody used at 1.25 ug/ml to detect target protein.