

Datasheet for ABIN629977  
**anti-PTBP2 antibody (N-Term)**



[Go to Product page](#)

1 Image

## Overview

Quantity:	100 µg
Target:	PTBP2
Binding Specificity:	N-Term
Reactivity:	Human, Mouse, Rat
Host:	Rabbit
Clonality:	Polyclonal
Conjugate:	This PTBP2 antibody is un-conjugated
Application:	Western Blotting (WB)

## Product Details

Immunogen:	PTBP2 antibody was raised using the N terminal of PTBP2 corresponding to a region with amino acids MDGIVTEVAVGVKRGSDLLSGSVLSSPNSNMSSMVVTANGNDSKKFKGE
Specificity:	PTBP2 antibody was raised against the N terminal of PTBP2
Purification:	Purified

## Target Details

Target:	PTBP2
Alternative Name:	PTBP2 ( <a href="#">PTBP2 Products</a> )
Background:	PTBP2 binds to the intronic cluster of RNA regulatory elements, downstream control sequence (DCS). It is implicated in controlling the assembly of other splicing-regulatory proteins. This protein is very similar to the polypyrimidine tract binding protein but it is expressed primarily in

## Target Details

---

the brain.

Molecular Weight: 40 kDa (MW of target protein)

Pathways: [Ribonucleoprotein Complex Subunit Organization, SARS-CoV-2 Protein Interactome](#)

## Application Details

---

Application Notes: WB: 1.25 µg/mL

Optimal conditions should be determined by the investigator.

Comment: PTBP2 Blocking Peptide, catalog no. 33R-5835, is also available for use as a blocking control in assays to test for specificity of this PTBP2 antibody

Restrictions: For Research Use only

## Handling

---

Format: Lyophilized

Reconstitution: Lyophilized powder. Add distilled water for a 1 mg/mL concentration of PTBP2 antibody in PBS

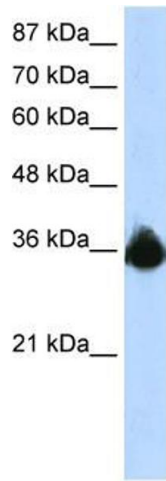
Concentration: Lot specific

Buffer: PBS

Handling Advice: Avoid repeated freeze/thaw cycles.  
Dilute only prior to immediate use.

Storage: 4 °C/-20 °C

Storage Comment: Store at 2-8 °C for short periods. For longer periods of storage, store at -20 °C.



### Western Blotting

**Image 1.** PTBP2 antibody used at 1.25 ug/ml to detect target protein.