

Datasheet for ABIN629980
anti-CPNE1 antibody (N-Term)



[Go to Product page](#)

2 Images

Overview

Quantity:	100 µg
Target:	CPNE1
Binding Specificity:	N-Term
Reactivity:	Human
Host:	Rabbit
Clonality:	Polyclonal
Conjugate:	This CPNE1 antibody is un-conjugated
Application:	Western Blotting (WB), Immunohistochemistry (IHC)

Product Details

Immunogen:	Copine I antibody was raised using the N terminal of CPNE1 corresponding to a region with amino acids TVQKLRFGIYDIDNKTPELRDDDFLGGAECSLGQIVSSQVLTLPMLKPG
Specificity:	Copine I antibody was raised against the N terminal of CPNE1
Purification:	Purified

Target Details

Target:	CPNE1
Alternative Name:	Copine I (CPNE1 Products)
Background:	Calcium-dependent membrane-binding proteins may regulate molecular events at the interface of the cell membrane and cytoplasm. CPNE1 is a calcium-dependent protein that also contains two N-terminal type II C2 domains and an integrin A domain-like sequence in the C-terminus.

Target Details

However, the protein does not contain a predicted signal sequence or transmembrane domains. This protein has a broad tissue distribution and it may function in membrane trafficking.

Molecular Weight: 59 kDa (MW of target protein)

Application Details

Application Notes: WB: 5 µg/mL, IHC: 4-8 µg/mL
Optimal conditions should be determined by the investigator.

Comment: Copine I Blocking Peptide, catalog no. 33R-9369, is also available for use as a blocking control in assays to test for specificity of this Copine I antibody

Restrictions: For Research Use only

Handling

Format: Lyophilized

Reconstitution: Lyophilized powder. Add distilled water for a 1 mg/mL concentration of CPNE1 antibody in PBS

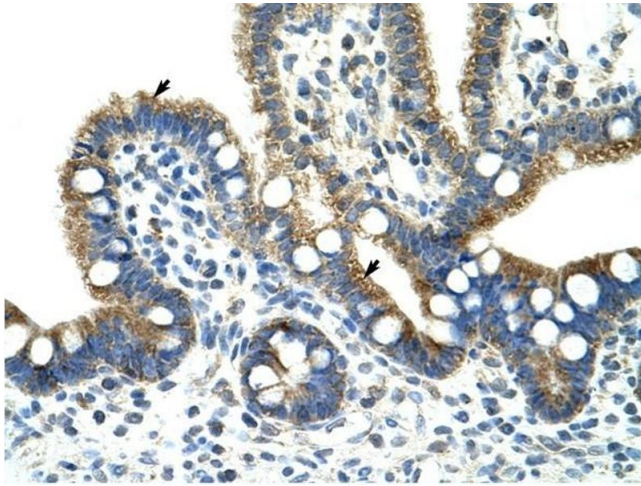
Concentration: Lot specific

Buffer: PBS

Handling Advice: Avoid repeated freeze/thaw cycles.
Dilute only prior to immediate use.

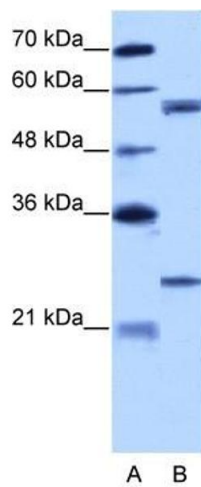
Storage: 4 °C/-20 °C

Storage Comment: Store at 2-8 °C for short periods. For longer periods of storage, store at -20 °C.



Immunohistochemistry

Image 1. Copine I antibody was used for immunohistochemistry at a concentration of 4-8 ug/ml to stain Epithelial cells of intestinal villus (arrows) in Human Intestine . Magnification is at 400X



Western Blotting

Image 2. Copine I antibody used at 5 ug/ml to detect target protein.