

Datasheet for ABIN629985  
**anti-NIP7 antibody**



[Go to Product page](#)

2 Images

## Overview

Quantity:	100 µg
Target:	NIP7
Reactivity:	Human, Mouse, Dog
Host:	Rabbit
Clonality:	Polyclonal
Conjugate:	This NIP7 antibody is un-conjugated
Application:	Western Blotting (WB), Immunohistochemistry (IHC)

## Product Details

Immunogen:	NIP7 antibody was raised using a synthetic peptide corresponding to a region with amino acids VVVYSMADIPLGFGVAAKSTQDCRKVDPMIAIVVFHQADIGEYVRHEETLT
Purification:	Purified

## Target Details

Target:	NIP7
Alternative Name:	NIP7 ( <a href="#">NIP7 Products</a> )
Background:	NIP7 contains 1PUA domain and belongs to the NIP7 family. It may play a role in 60S ribosomal subunit synthesis.
Molecular Weight:	20 kDa (MW of target protein)
Pathways:	<a href="#">Ribonucleoprotein Complex Subunit Organization</a> , <a href="#">Ribosome Assembly</a>

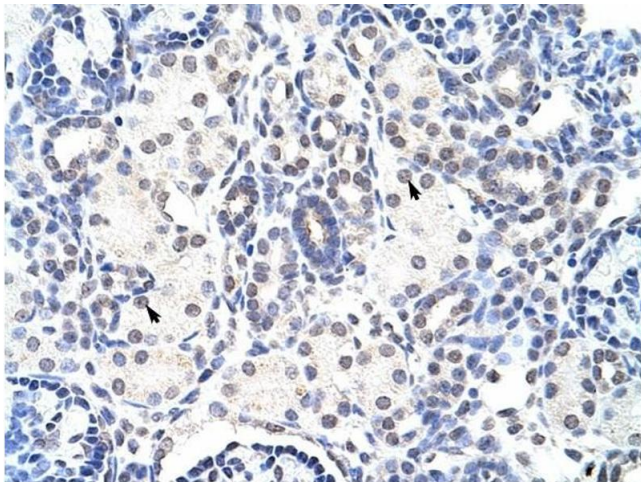
## Application Details

Application Notes:	WB: 5 µg/mL, IHC: 4-8 µg/mL Optimal conditions should be determined by the investigator.
Comment:	NIP7 Blocking Peptide, catalog no. 33R-9905, is also available for use as a blocking control in assays to test for specificity of this NIP7 antibody
Restrictions:	For Research Use only

## Handling

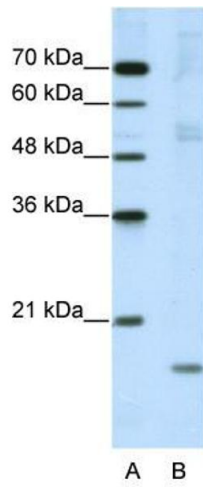
Format:	Lyophilized
Reconstitution:	Lyophilized powder. Add distilled water for a 1 mg/mL concentration of NIP7 antibody in PBS
Concentration:	Lot specific
Buffer:	PBS
Handling Advice:	Avoid repeated freeze/thaw cycles.
Storage:	4 °C/-20 °C
Storage Comment:	Store at 2-8 °C for short periods. For longer periods of storage, store at -20 °C.

## Images



### Immunohistochemistry

**Image 1.** NIP7 antibody was used for immunohistochemistry at a concentration of 4-8 ug/ml to stain Epithelial cells of renal tubule (arrows) in Human Kidney. Magnification is at 400X



### Western Blotting

**Image 2.** NIP7 antibody used at 5 ug/ml to detect target protein.