

Datasheet for ABIN629986 **anti-CPSF3 antibody (N-Term)**



[Go to Product page](#)

1 Image

Overview

Quantity:	100 µg
Target:	CPSF3
Binding Specificity:	N-Term
Reactivity:	Human, Mouse, Rat, Dog, Zebrafish (Danio rerio)
Host:	Rabbit
Clonality:	Polyclonal
Conjugate:	This CPSF3 antibody is un-conjugated
Application:	Western Blotting (WB)

Product Details

Immunogen:	CPSF3 antibody was raised using the N terminal of CPSF3 corresponding to a region with amino acids MAAEIPNIKPDILIIESTYGTHIHEKREEREARFCNTVHDIVNRGGRLI
Specificity:	CPSF3 antibody was raised against the N terminal of CPSF3
Purification:	Purified

Target Details

Target:	CPSF3
Alternative Name:	CPSF3 (CPSF3 Products)
Background:	CPSF3 belongs to the RNA-metabolizing metallo-beta-lactamase-like family, CPSF3 subfamily. It is component of the cleavage and polyadenylation specificity factor (CPSF) complex that play a key role in pre-mRNA 3'-end formation, recognizing the AAUAAA signal sequence and

Target Details

interacting with poly(A) polymerase and other factors to bring about cleavage and poly(A) addition.

Molecular Weight: 75 kDa (MW of target protein)

Application Details

Application Notes: WB: 5 µg/mL
Optimal conditions should be determined by the investigator.

Comment: CPSF3 Blocking Peptide, catalog no. 33R-5592, is also available for use as a blocking control in assays to test for specificity of this CPSF3 antibody

Restrictions: For Research Use only

Handling

Format: Lyophilized

Reconstitution: Lyophilized powder. Add distilled water for a 1 mg/mL concentration of CPSF3 antibody in PBS

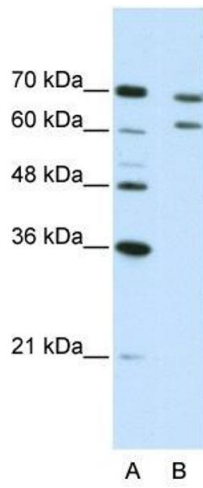
Concentration: Lot specific

Buffer: PBS

Handling Advice: Avoid repeated freeze/thaw cycles.
Dilute only prior to immediate use.

Storage: 4 °C/-20 °C

Storage Comment: Store at 2-8 °C for short periods. For longer periods of storage, store at -20 °C.



Western Blotting

Image 1. CPSF3 antibody used at 5 ug/ml to detect target protein.