

## Datasheet for ABIN629988 **anti-PABPC4 antibody (N-Term)**



[Go to Product page](#)

### 2 Images

#### Overview

Quantity:	100 µg
Target:	PABPC4
Binding Specificity:	N-Term
Reactivity:	Human, Dog
Host:	Rabbit
Clonality:	Polyclonal
Conjugate:	This PABPC4 antibody is un-conjugated
Application:	Western Blotting (WB), Immunohistochemistry (IHC)

#### Product Details

Immunogen:	PABPC4 antibody was raised using the N terminal of PABPC4 corresponding to a region with amino acids AELGAKAKEFTNVYIKNFGEEVDDESLKELFSQFGKTL SVKVMRDPNGKS
Specificity:	PABPC4 antibody was raised against the N terminal of PABPC4
Purification:	Purified

#### Target Details

Target:	PABPC4
Alternative Name:	PABPC4 ( <a href="#">PABPC4 Products</a> )
Background:	Poly(A)-binding proteins (PABPs) bind to the poly(A) tail present at the 3-prime ends of most eukaryotic mRNAs. PABPC4 or IPABP (inducible PABP) was isolated as an activation-induced T-cell mRNA encoding a protein. Activation of T cells increased PABPC4 mRNA levels in T cells

## Target Details

---

approximately 5-fold. PABPC4 contains 4 RNA-binding domains and proline-rich C terminus. PABPC4 is localized primarily to the cytoplasm. It is suggested that PABPC4 might be necessary for regulation of stability of labile mRNA species in activated T cells.

Molecular Weight: 71 kDa (MW of target protein)

Pathways: [SARS-CoV-2 Protein Interactome](#)

## Application Details

---

Application Notes: WB: 1.25 µg/mL, IHC: 4-8 µg/mL  
Optimal conditions should be determined by the investigator.

Comment: PABPC4 Blocking Peptide, catalog no. 33R-1137, is also available for use as a blocking control in assays to test for specificity of this PABPC4 antibody

Restrictions: For Research Use only

## Handling

---

Format: Lyophilized

Reconstitution: Lyophilized powder. Add distilled water for a 1 mg/mL concentration of PABPC4 antibody in PBS

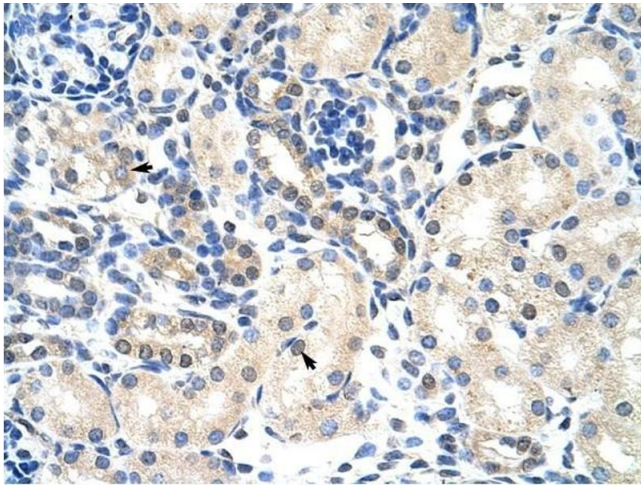
Concentration: Lot specific

Buffer: PBS

Handling Advice: Avoid repeated freeze/thaw cycles.  
Dilute only prior to immediate use.

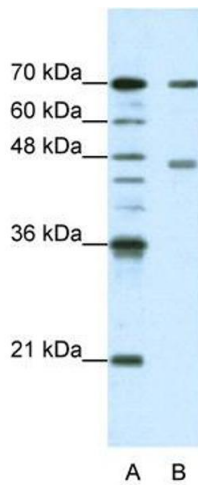
Storage: 4 °C/-20 °C

Storage Comment: Store at 2-8 °C for short periods. For longer periods of storage, store at -20 °C.



### Immunohistochemistry

**Image 1.** PABPC4 antibody was used for immunohistochemistry at a concentration of 4-8 ug/ml to stain Epithelial cells of renal tubule (arrows) in Human Kidney. Magnification is at 400X



### Western Blotting

**Image 2.** PABPC4 antibody used at 1.25 ug/ml to detect target protein.