

Datasheet for ABIN629996  
**anti-SNRPF antibody (N-Term)**



[Go to Product page](#)

2 Images

## Overview

Quantity:	100 µg
Target:	SNRPF
Binding Specificity:	N-Term
Reactivity:	Human, Mouse, Rat, Dog, Zebrafish (Danio rerio)
Host:	Rabbit
Clonality:	Polyclonal
Conjugate:	This SNRPF antibody is un-conjugated
Application:	Western Blotting (WB), Immunohistochemistry (IHC)

## Product Details

Immunogen:	SNRPF antibody was raised using the N terminal of SNRPF corresponding to a region with amino acids MSLPLNPKPFLNGLTGKPVMMVKLKWGM EYKGYLVSVDGYMNMQLANTEEY
Specificity:	SNRPF antibody was raised against the N terminal of SNRPF
Purification:	Purified

## Target Details

Target:	SNRPF
Alternative Name:	SNRPF ( <a href="#">SNRPF Products</a> )
Background:	SNRPF belongs to the snRNP Sm proteins family and is associated with snRNP U1, U2, U4/U6 and U5.

## Target Details

Molecular Weight:	9 kDa (MW of target protein)
Pathways:	<a href="#">Ribonucleoprotein Complex Subunit Organization</a>

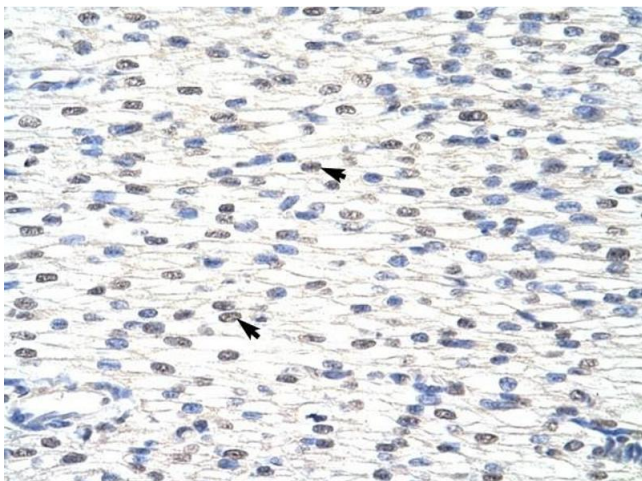
## Application Details

Application Notes:	WB: 0.31 µg/mL, IHC: 4-8 µg/mL Optimal conditions should be determined by the investigator.
Comment:	SNRPF Blocking Peptide, catalog no. 33R-6466, is also available for use as a blocking control in assays to test for specificity of this SNRPF antibody
Restrictions:	For Research Use only

## Handling

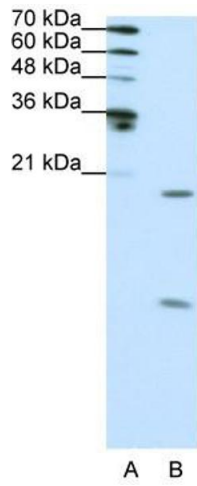
Format:	Lyophilized
Reconstitution:	Lyophilized powder. Add distilled water for a 1 mg/mL concentration of SNRPF antibody in PBS
Concentration:	Lot specific
Buffer:	PBS
Handling Advice:	Avoid repeated freeze/thaw cycles. Dilute only prior to immediate use.
Storage:	4 °C/-20 °C
Storage Comment:	Store at 2-8 °C for short periods. For longer periods of storage, store at -20 °C.

## Images



### Immunohistochemistry

**Image 1.** SNRPF antibody was used for immunohistochemistry at a concentration of 4-8 ug/ml to stain Myocardial cells (arrows) in Human Heart. Magnification is at 400X



### Western Blotting

**Image 2.** SNRPF antibody used at 0.31 ug/ml to detect target protein.