

Datasheet for ABIN629997  
**anti-SFRS8 antibody (N-Term)**



[Go to Product page](#)

1 Image

## Overview

Quantity:	100 µg
Target:	SFRS8 (SFSWAP)
Binding Specificity:	N-Term
Reactivity:	Human
Host:	Rabbit
Clonality:	Polyclonal
Conjugate:	This SFRS8 antibody is un-conjugated
Application:	Western Blotting (WB)

## Product Details

Immunogen:	SFRS8 antibody was raised using the N terminal of SFRS8 corresponding to a region with amino acids MYGASGGRAKPERKSGAKEEAGPGGAGGGGSRVELLVFGYACKLFRDDER
Specificity:	SFRS8 antibody was raised against the N terminal of SFRS8
Purification:	Purified

## Target Details

Target:	SFRS8 (SFSWAP)
Alternative Name:	SFRS8 ( <a href="#">SFSWAP Products</a> )
Background:	SFRS8 is a human homolog of Drosophila splicing regulatory protein.
Molecular Weight:	105 kDa (MW of target protein)

## Target Details

Pathways: [Ribonucleoprotein Complex Subunit Organization](#)

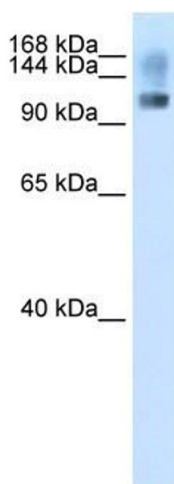
## Application Details

Application Notes:	WB: 2.5 µg/mL Optimal conditions should be determined by the investigator.
Comment:	SFRS8 Blocking Peptide, catalog no. 33R-6624, is also available for use as a blocking control in assays to test for specificity of this SFRS8 antibody
Restrictions:	For Research Use only

## Handling

Format:	Lyophilized
Reconstitution:	Lyophilized powder. Add distilled water for a 1 mg/mL concentration of SFRS8 antibody in PBS
Concentration:	Lot specific
Buffer:	PBS
Handling Advice:	Avoid repeated freeze/thaw cycles. Dilute only prior to immediate use.
Storage:	4 °C/-20 °C
Storage Comment:	Store at 2-8 °C for short periods. For longer periods of storage, store at -20 °C.

## Images



### Western Blotting

**Image 1.** SFRS8 antibody used at 2.5 ug/ml to detect target protein.