

Datasheet for ABIN629998 **anti-APOBEC2 antibody (N-Term)**

2 Images



[Go to Product page](#)

Overview

Quantity:	100 µg
Target:	APOBEC2
Binding Specificity:	N-Term
Reactivity:	Human, Dog
Host:	Rabbit
Clonality:	Polyclonal
Conjugate:	This APOBEC2 antibody is un-conjugated
Application:	Western Blotting (WB), Immunohistochemistry (IHC)

Product Details

Immunogen:	ApoBEC2 antibody was raised using the N terminal of APOBEC2 corresponding to a region with amino acids VATEAASQNGEDLENLDDPEKLEKELIELPPFEIVTGERLPANFFKFQFRN
Specificity:	ApoBEC2 antibody was raised against the N terminal of APOBEC2
Purification:	Purified

Target Details

Target:	APOBEC2
Alternative Name:	ApoBEC2 (APOBEC2 Products)
Background:	APOBEC2 belongs to the cytidine and deoxycytidylate deaminase family. It is probable C to U editing enzyme whose physiological substrate is not yet known. It does not display detectable apoB mRNA editing and has a low intrinsic cytidine deaminase activity.

Target Details

Molecular Weight: 25 kDa (MW of target protein)

Application Details

Application Notes: WB: 1.25 µg/mL, IHC: 4-8 µg/mL
Optimal conditions should be determined by the investigator.

Comment: ApoBEC2 Blocking Peptide, catalog no. 33R-9438, is also available for use as a blocking control in assays to test for specificity of this ApoBEC2 antibody

Restrictions: For Research Use only

Handling

Format: Lyophilized

Reconstitution: Lyophilized powder. Add distilled water for a 1 mg/mL concentration of APOBEC2 antibody in PBS

Concentration: Lot specific

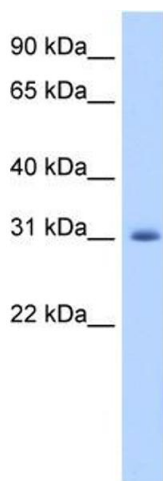
Buffer: PBS

Handling Advice: Avoid repeated freeze/thaw cycles.
Dilute only prior to immediate use.

Storage: 4 °C/-20 °C

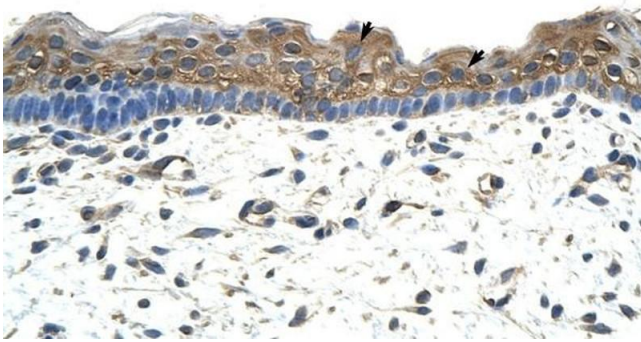
Storage Comment: Store at 2-8 °C for short periods. For longer periods of storage, store at -20 °C.

Images



Western Blotting

Image 1. ApoBEC2 antibody used at 1.25 ug/ml to detect target protein.



Immunohistochemistry

Image 2. ApoBEC2 antibody was used for immunohistochemistry at a concentration of 4-8 ug/ml to stain Squamous epithelial cells (arrows) in Human Skin. Magnification is at 400X