

## Datasheet for ABIN629999 **anti-RPL8 antibody (C-Term)**

### 2 Images



[Go to Product page](#)

### Overview

|                      |   |
|----------------------|---|
| Quantity:            | 100 µg  |
| Target:              | RPL8  |
| Binding Specificity: | C-Term  |
| Reactivity:          | Human, Mouse, Rat, Dog                            |
| Host:                | Rabbit  |
| Clonality:           | Polyclonal  |
| Conjugate:           | This RPL8 antibody is un-conjugated               |
| Application:         | Western Blotting (WB), Immunohistochemistry (IHC) |

### Product Details

|               |   |
|---------------|---|
| Immunogen:    | RPL8 antibody was raised using the C terminal of RPL8 corresponding to a region with amino acids EHPFGGGNHQHIGKPSTIRRDAPAGRKVGLIAARRTGRLRGTKTVQEKEN |
| Specificity:  | RPL8 antibody was raised against the C terminal of RPL8   |
| Purification: | Purified  |

### Target Details

|                   |  |
|-------------------|--|
| Target:           | RPL8   |
| Alternative Name: | RPL8 ( <a href="#">RPL8 Products</a> )   |
| Background:       | Ribosomes, the organelles that catalyze protein synthesis, consist of a small 40S subunit and a large 60S subunit. Together these subunits are composed of 4 RNA species and approximately 80 structurally distinct proteins. RPL8 is a ribosomal protein that is a component of the 60S |

## Target Details

---

subunit. The protein belongs to the L2P family of ribosomal proteins. It is located in the cytoplasm.

Molecular Weight: 28 kDa (MW of target protein)

Pathways: [Regulation of Cell Size](#)

## Application Details

---

Application Notes: WB: 0.3125 µg/mL, IHC: 4-8 µg/mL  
Optimal conditions should be determined by the investigator.

Comment: RPL8 Blocking Peptide, catalog no. 33R-2455, is also available for use as a blocking control in assays to test for specificity of this RPL8 antibody

Restrictions: For Research Use only

## Handling

---

Format: Lyophilized

Reconstitution: Lyophilized powder. Add distilled water for a 1 mg/mL concentration of RPL8 antibody in PBS

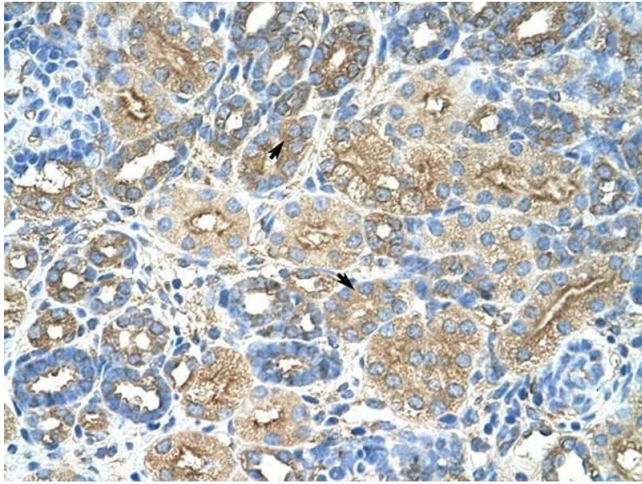
Concentration: Lot specific

Buffer: PBS

Handling Advice: Avoid repeated freeze/thaw cycles.  
Dilute only prior to immediate use.

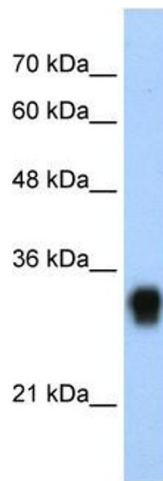
Storage: 4 °C/-20 °C

Storage Comment: Store at 2-8 °C for short periods. For longer periods of storage, store at -20 °C.



### Immunohistochemistry

**Image 1.** RPL8 antibody was used for immunohistochemistry at a concentration of 4-8 ug/ml to stain Epithelial cells of renal tubule (arrows) in Human Kidney. Magnification is at 400X



### Western Blotting

**Image 2.** RPL8 antibody used at 0.3125 ug/ml to detect target protein.