

Datasheet for ABIN630002 **anti-RPL8 antibody (C-Term)**

2 Images



[Go to Product page](#)

Overview

Quantity:	100 µg
Target:	RPL8
Binding Specificity:	C-Term
Reactivity:	Human, Mouse, Rat, Dog, Zebrafish (Danio rerio)
Host:	Rabbit
Clonality:	Polyclonal
Conjugate:	This RPL8 antibody is un-conjugated
Application:	Western Blotting (WB), Immunohistochemistry (IHC)

Product Details

Immunogen:	RPL8 antibody was raised using the C terminal of RPL8 corresponding to a region with amino acids KKVISSANRAVVGVVAGGGRIDKPILKAGRAYHKYKAKRNCWPRVRGVAM
Specificity:	RPL8 antibody was raised against the C terminal of RPL8
Purification:	Purified

Target Details

Target:	RPL8
Alternative Name:	RPL8 (RPL8 Products)
Background:	Ribosomes, the organelles that catalyze protein synthesis, consist of a small 40S subunit and a large 60S subunit. Together these subunits are composed of 4 RNA species and approximately 80 structurally distinct proteins. RPL8 is a ribosomal protein that is a component of the 60S

Target Details

subunit. The protein belongs to the L2P family of ribosomal proteins. It is located in the cytoplasm.

Molecular Weight: 28 kDa (MW of target protein)

Pathways: [Regulation of Cell Size](#)

Application Details

Application Notes: WB: 0.3125 µg/mL, IHC: 4-8 µg/mL
Optimal conditions should be determined by the investigator.

Comment: RPL8 Blocking Peptide, catalog no. 33R-4496, is also available for use as a blocking control in assays to test for specificity of this RPL8 antibody

Restrictions: For Research Use only

Handling

Format: Lyophilized

Reconstitution: Lyophilized powder. Add distilled water for a 1 mg/mL concentration of RPL8 antibody in PBS

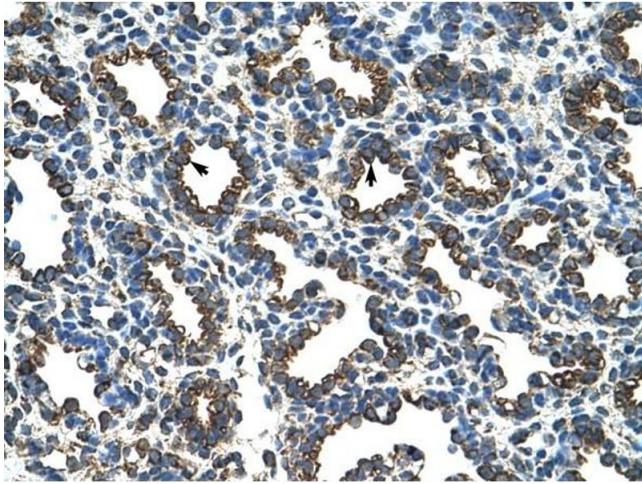
Concentration: Lot specific

Buffer: PBS

Handling Advice: Avoid repeated freeze/thaw cycles.
Dilute only prior to immediate use.

Storage: 4 °C/-20 °C

Storage Comment: Store at 2-8 °C for short periods. For longer periods of storage, store at -20 °C.



Immunohistochemistry

Image 1. RPL8 antibody was used for immunohistochemistry at a concentration of 4-8 ug/ml to stain Alveolar cells (arrows) in Human Lung. Magnification is at 400X



Western Blotting

Image 2. RPL8 antibody used at 0.3125 ug/ml to detect target protein.