

Datasheet for ABIN630007 anti-PPIE antibody



[Go to Product page](#)

1 Image

Overview

Quantity:	100 µg
Target:	PPIE
Reactivity:	Human, Mouse, Rat, Dog, Zebrafish (Danio rerio), Drosophila melanogaster
Host:	Rabbit
Clonality:	Polyclonal
Conjugate:	This PPIE antibody is un-conjugated
Application:	Western Blotting (WB)

Product Details

Immunogen:	PPIE antibody was raised using a synthetic peptide corresponding to a region with amino acids RIIPQFMCQGGDFTNHNGTGGKSIYGKKFDDENFILKHTGPGLLSMANS
Purification:	Purified

Target Details

Target:	PPIE
Alternative Name:	PPIE (PPIE Products)
Background:	PPIE is a member of the peptidyl-prolyl cis-trans isomerase (PPIase) family. PPIases catalyze the cis-trans isomerization of proline imidic peptide bonds in oligopeptides and accelerate the folding of proteins. This protein contains a highly conserved cyclophilin (CYP) domain as well as an RNA-binding domain.
Molecular Weight:	26 kDa (MW of target protein)

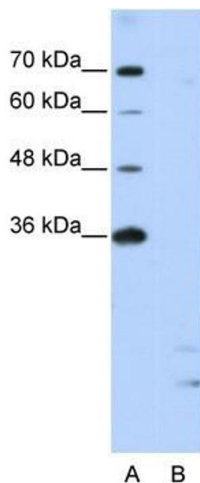
Application Details

Application Notes:	WB: 2.5 µg/mL Optimal conditions should be determined by the investigator.
Comment:	PPIE Blocking Peptide, catalog no. 33R-7968, is also available for use as a blocking control in assays to test for specificity of this PPIE antibody
Restrictions:	For Research Use only

Handling

Format:	Lyophilized
Reconstitution:	Lyophilized powder. Add distilled water for a 1 mg/mL concentration of PPIE antibody in PBS
Concentration:	Lot specific
Buffer:	PBS
Handling Advice:	Avoid repeated freeze/thaw cycles.
Storage:	4 °C/-20 °C
Storage Comment:	Store at 2-8 °C for short periods. For longer periods of storage, store at -20 °C.

Images



Western Blotting

Image 1. PPIE antibody used at 2.5 µg/ml to detect target protein.