

Datasheet for ABIN630011 anti-LSM2 antibody

3 Images



[Go to Product page](#)

Overview

Quantity:	100 µg
Target:	LSM2
Reactivity:	Human, Mouse, Rat, Dog
Host:	Rabbit
Clonality:	Polyclonal
Conjugate:	This LSM2 antibody is un-conjugated
Application:	Western Blotting (WB), Immunohistochemistry (IHC)

Product Details

Immunogen:	LSM2 antibody was raised using a synthetic peptide corresponding to a region with amino acids TDPEKYPHMLSVKNCFIRGSVRYVQLPADEVDTQLLQDAARKEALQQKQ
Purification:	Purified

Target Details

Target:	LSM2
Alternative Name:	LSM2 (LSM2 Products)
Background:	Sm-like proteins were identified in a variety of organisms based on sequence homology with the Sm protein family. Sm-like proteins contain the Sm sequence motif, which consists of 2 regions separated by a linker of variable length that folds as a loop. The Sm-like proteins are thought to form a stable heteromer present in tri-snRNP particles, which are important for pre-mRNA splicing.

Target Details

Molecular Weight:	10 kDa (MW of target protein)
Pathways:	Ribonucleoprotein Complex Subunit Organization

Application Details

Application Notes:	WB: 1.25 µg/mL, IHC: 4-8 µg/mL Optimal conditions should be determined by the investigator.
Comment:	LSM2 Blocking Peptide, catalog no. 33R-9016, is also available for use as a blocking control in assays to test for specificity of this LSM2 antibody
Restrictions:	For Research Use only

Handling

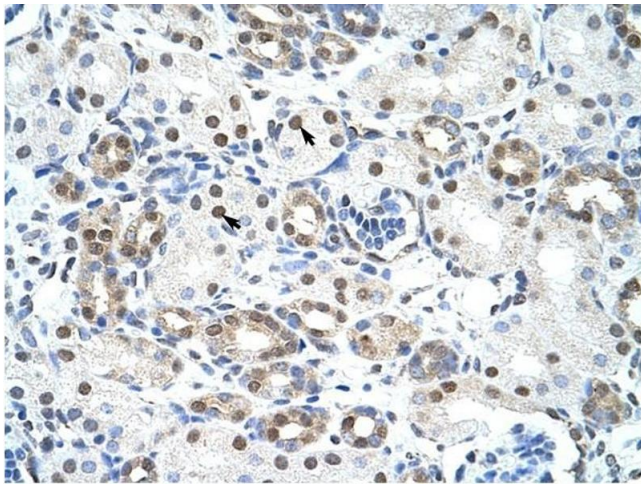
Format:	Lyophilized
Reconstitution:	Lyophilized powder. Add distilled water for a 1 mg/mL concentration of LSM2 antibody in PBS
Concentration:	Lot specific
Buffer:	PBS
Handling Advice:	Avoid repeated freeze/thaw cycles.
Storage:	4 °C/-20 °C
Storage Comment:	Store at 2-8 °C for short periods. For longer periods of storage, store at -20 °C.

Images



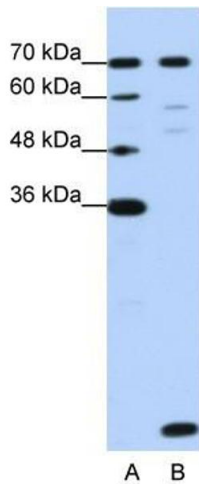
Immunohistochemistry

Image 1. LSM2 antibody was used for immunohistochemistry at a concentration of 4-8 ug/ml to stain Myocardial cells (arrows) in Human Heart. Magnification is at 400X



Immunohistochemistry

Image 2. LSM2 antibody was used for immunohistochemistry at a concentration of 4-8 ug/ml to stain Epithelial cells of renal tubule (arrows) in Human Kidney. Magnification is at 400X.



Western Blotting

Image 3. LSM2 antibody used at 1.25 ug/ml to detect target protein.